

REV. AX

UNLESS OTHERWISE NOTED

TOLERANCES ARE:

ONE PLACE DECIMALS $\pm .1$
TWO PLACE DECIMALS $\pm .01$ THREE PLACE DECIMALS $\pm .005$
FOUR PLACE DECIMALS $\pm .0020$ ANGLES
 $\pm 2^\circ$

TITLE:

LOW COST
BOARD SPACERS

DWG NO:

XW-XX-XX-XXX-X-XXXX-XXX-XX-XXX

SHEET 2 OF 2

CRIMP SHORTER TAIL
(OPPOSITE GOLD CONTACT AREA).090 MIN.
(SEE NOTE 11)

.04

TSW-XX-S

-S

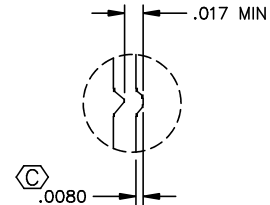
SEE CRIMP DETAIL

RTSW-XX-D

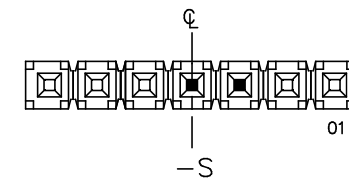
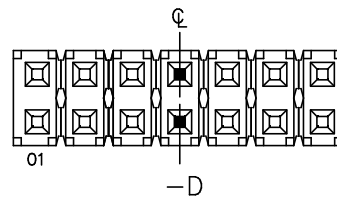
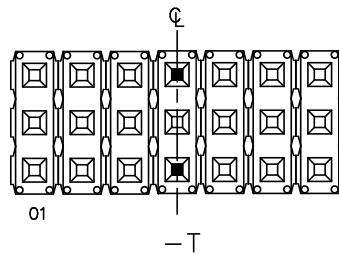
-D

TSW-50-T

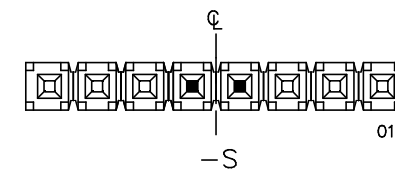
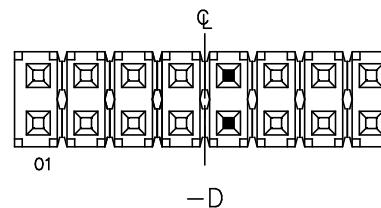
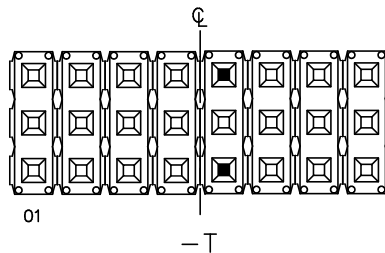
-T



CRIMP DETAIL

SCALE: 2x
[TYP- ALL CRIMPS]FIG. 1
LOCKING LEAD OPTION

■ = CRIMP LOCATION

CRIMP CENTER POSITION AND PIN CLOSEST TO PIN 1
ODD POSITIONS

■ = CRIMP LOCATION

TWO CENTER MOST PINS TO BE CRIMPED
EVEN POSITIONS

PROPRIETARY NOTE

THIS DOCUMENT CONTAINS INFORMATION
CONFIDENTIAL AND PROPRIETARY TO
SAMTEC INC. AND SHALL NOT BE
REPRODUCED OR TRANSFERRED TO
OTHER DOCUMENTS OR DISCLOSED TO
OTHERS OR USED FOR ANY PURPOSE
OTHER THAN THAT FOR WHICH IT WAS
OBTAINED WITHOUT THE EXPRESSED
WRITTEN CONSENT OF SAMTEC INC.MISC_MKGT
XW-XX-XX-XXX-X-XXXX-XXX-XX-XXX-MKT2**samtec**520 PARK EAST BLVD. NEW ALBANY, INDIANA 47150
PHONE (812) 944-6733 P.O. BOX 1147
CODE 55322

MADE BY:

WILLIAMS 8-13-84

XW-XX-XX-XXX-X-XXXX-XXX-XX-XXX

SHEET 2 OF 2