

Customer Information Sheet

DRAWING No.: Z80-290

SHEET 2 OF 2

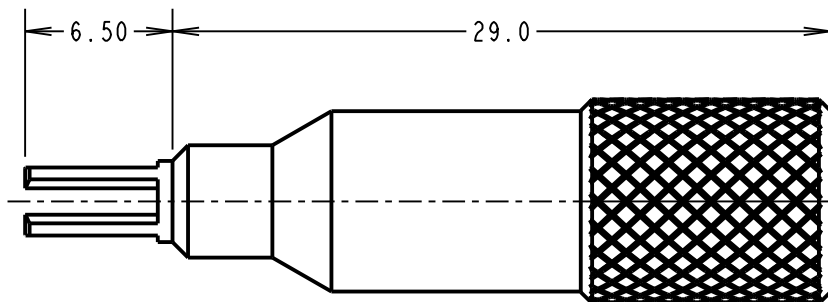
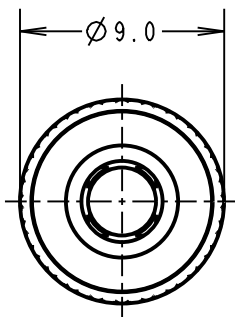
IF IN DOUBT - ASK

(C)

NOT TO SCALE

THIRD ANGLE PROJECTION

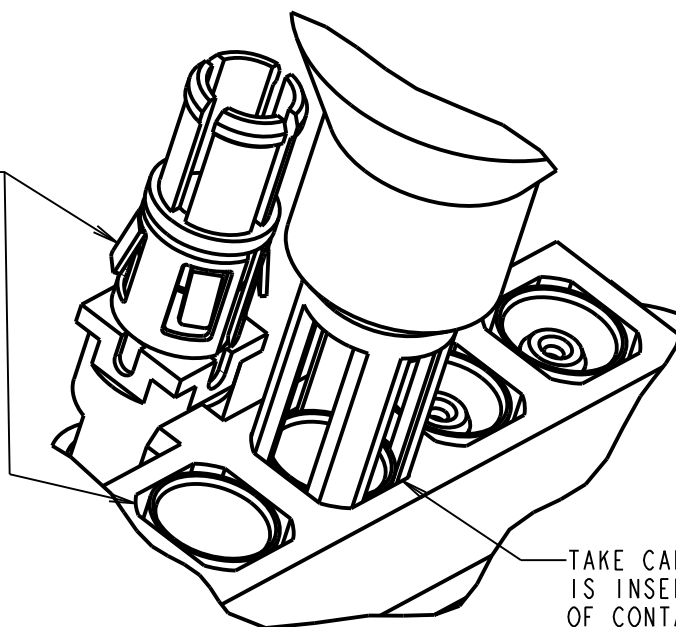
ALL DIMENSIONS IN mm



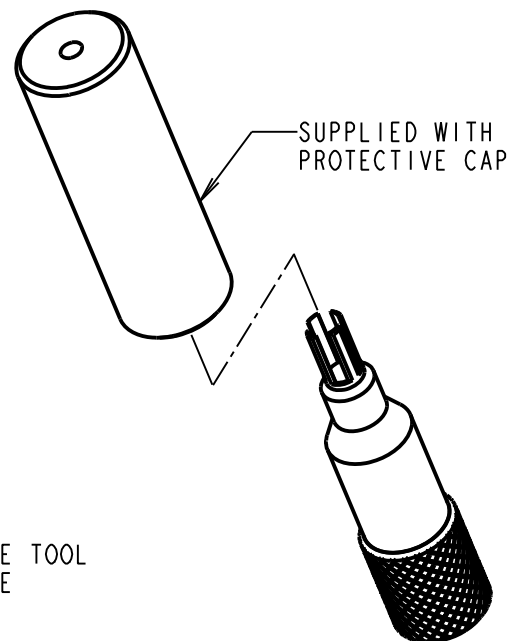
FOR REMOVAL OF
CONTACT PART No.:

M80-305, M80-306, M80-307
M80-308, M80-309
M80-315, M80-316, M80-317
M80-318, M80-319
M80-325, M80-326, M80-327, M80-328, M80-329
M80-32A, M80-32B, M80-32C
M80-335, M80-336, M80-337, M80-338, M80-339

LINE UP TOOL WITH
RETENTION FEATURE
AND INSERT TO RELEASE
CONTACT FROM MOULDING



TAKE CARE TO ENSURE TOOL
IS INSERTED OUTSIDE
OF CONTACT



MGP	3	18.03.13	11979
NAME	ISS.	DATE	C/NOTE
APPROVED: MGP			
CHECKED: SF			
DRAWN: J BROOKES			
CUSTOMER REF.:			
ASSEMBLY DRG:			

HARWIN

www.harwin.com
technical@harwin.com

THIS DRAWING AND ANY
INFORMATION OR DESCRIPTIVE
MATTER SET OUT HEREON ARE
CONFIDENTIAL AND COPYRIGHT
PROPERTY OF THE HARWIN
GROUP AND MUST NOT BE
DISCLOSED, LOANED, COPIED
OR USED FOR MANUFACTURING,
TENDERING OR FOR ANY
OTHER PURPOSE WITHOUT
THEIR WRITTEN PERMISSION.

TOLERANCES

X. = $\pm 1\text{mm}$
X.X = $\pm 0.25\text{mm}$
X.XX = $\pm 0.10\text{mm}$
X.XXX = $\pm 0.01\text{mm}$

ANGLES = $\pm 5^\circ$
UNLESS STATED

MATERIAL:

TOOL = STAINLESS STEEL
CAP = BLACK NYLON

FINISH:

S/AREA:

mm²

TITLE:

MIX TEK SPECIAL CONTACT
REMOVAL TOOL

DRAWING NUMBER:

Z80-290

SHT
2
OF 2