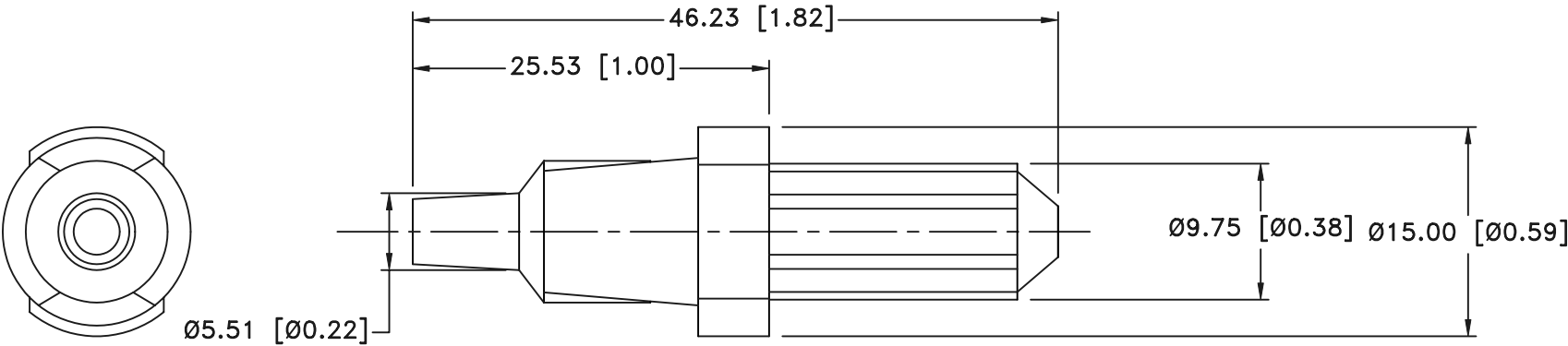


Date	SYM	REVISION RECORD	AUTH	DR.	CK.
10/04/03	A	CORRECTED FUSE SIZE	T.B.	B.S.	
10/18/03	B	UPDATED NOTES	T.B.	B.S.	



NOTES:

1. MATERIAL:
HOUSING : WHITE PLASTIC.
RATING: 250V, 10A
FUSE: FITS $\varnothing 5 \times 20$ mm

Tolerance (Except as noted)	<div> <div>MPD</div> <div>Memory Protection Devices, Inc</div> <div>200 Broad Hollow Road, Farmingdale, New York 11735</div> </div>		
	decimal $\pm .5$ (.020)	Scale	Drawn By B.S.
			Approved By T.B.
	Fractional $\pm .8$ (.030)	Title FUSE HOLDER	
Angular $\pm 3^\circ$	Date 10/18/03	Drawing Number ZB3251	