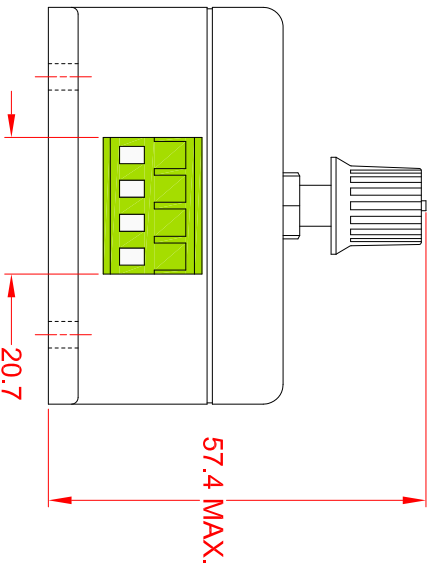
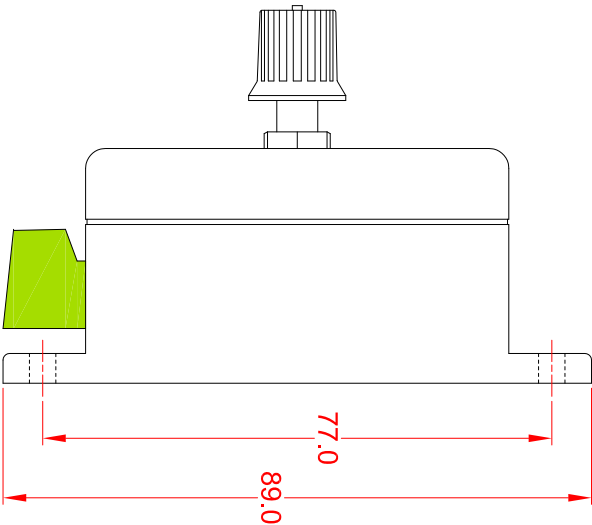
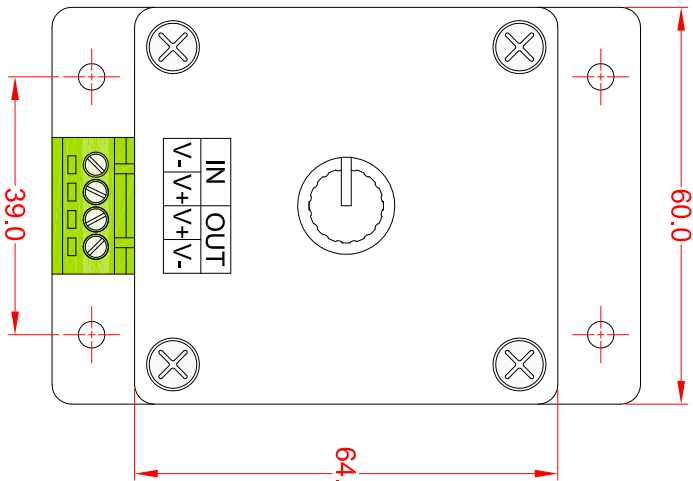


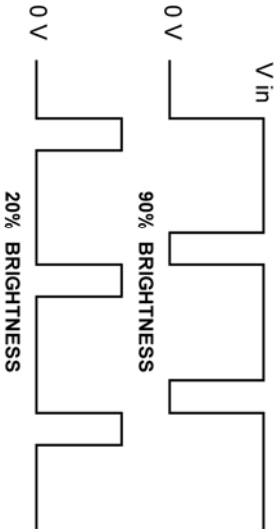
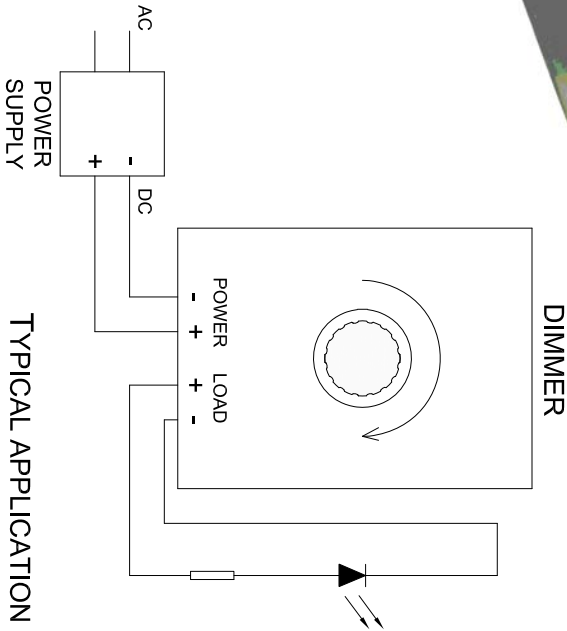
PWM LED DIMMER

FEATURES:

- WILL OPERATE ON 5, 6, 12 OR 24 VOLTS DC
- UP TO 8 AMPS OF AVAILABLE CURRENT DRIVE
- PULSE WIDTH MODULATED OUTPUT FOR SMOOTH TRANSITION FROM 100% TO 20% BRIGHTNESS
- OPERATION TEMPERATURE -20° C TO +60° C
- LOW POWER CONSUMPTION (LESS THAN 1 WATT)



REV.	DESCRIPTION/ECO NO.	DATE
	RELEASED	6/15/10
A	ADD ELECTRICAL CHART	4/14/11
B	CHANGE 24V ON ELECT. CHART	4/26/11
C	ADD FEATURES NOTE & PHOTO	6/24/13



JKL PART NO.: ZDM-01

METRIC	DIMENSIONS ARE IN MILLIMETERS	TITLE
	TOLERANCE UNLESS OTHERWISE SPECIFIED 1 PL +/- REF. 2 PL +/- REF. ANGLE +/- REF.	JKL COMPONENTS CORPORATION
DRAWN BY L. WENGSTROM	APP'D BY L.R.	DATE 6/24/13
SIZE A	FSCM NO. 55335	DRAWING NO. ZDM-01
SCALE NOT TO SCALE	RELEASED DATE 6/15/10	REVISION DATE 6/24/13
REV. C	SHEET 1 OF 1	