

MICRO SWITCH

A DIVISION OF MINNEAPOLIS-HONEYWELL REGULATOR COMPANY
 ROSSFORD, MINNESOTA
 FED. MFR. CODE 91929

SWITCH - BASIC

CATALOG LISTING

BA-2R

PRODUCT CODE: ABF4000

(M) BA-2R
 ISSUE 4

BA-2R
 PAGE 1 OF 1

M

DRAWING NUMBER

REPLACES

RELEASE NO.

23NOV05

RJ

CHECK

22 MAR 56

21 AUG 56

9 JUN 94

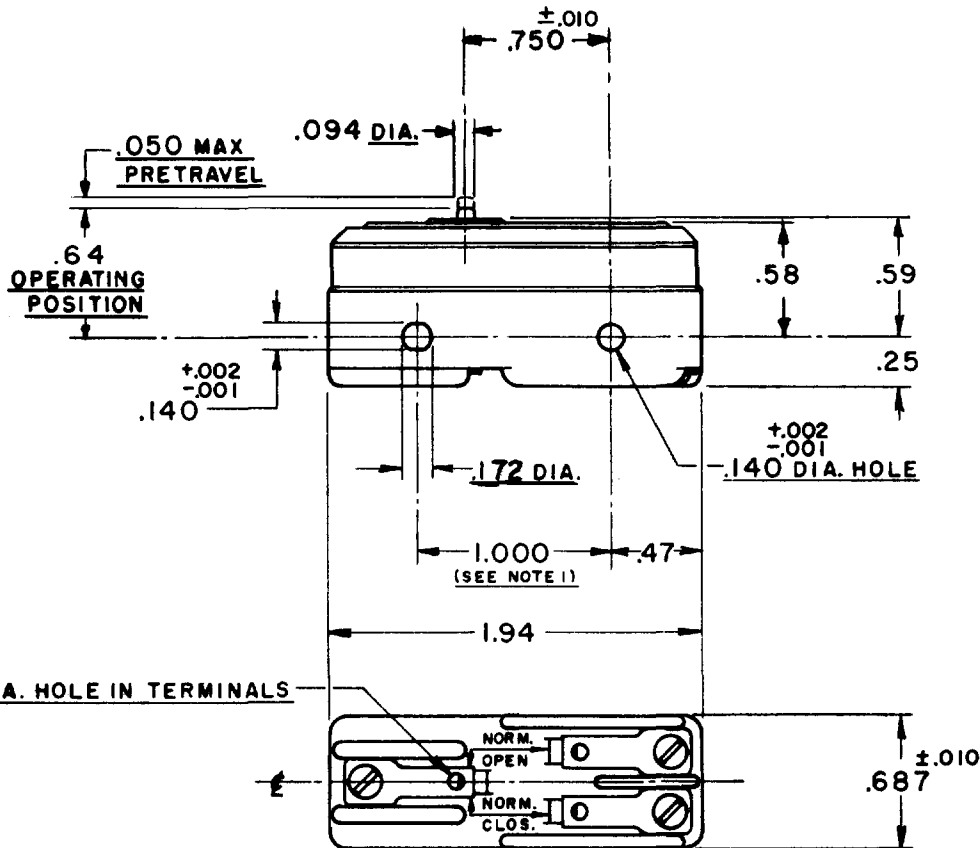
21 JAN 98

21 AUG 98

20 SEP 99

23NOV05

REVISIONS	
A	C.O. 9600 K.A.F. 20 MARCH 56
B	50 R.R. O.N.W. 21 AUG 56
C	CO 77590 SAD 9 JUN 94
D	CO- 92159 C.S.L. 21 JAN 98
E	CO93346 D.L.T. 21 AUG 98
F	CO- 94212 - C D.L.T. 20 SEP 99
G	0016786 SPK 23NOV05



NOTE

1- MOUNTING HOLES WILL ACCEPT PINS OR SCREWS OF .139 MAX. DIA. ON 1.000^{±.002} CENTERS.

THIS DRAWING COVERS A PROPRIETARY ITEM AND IS THE PROPERTY OF MICRO SWITCH, A DIVISION OF HONEYWELL. THIS DRAWING IS NOT TO BE COPIED OR USED WITHOUT THE APPROVAL OF MICRO SWITCH.

CHARACTERISTICS

OPERATING FORCE ----- 14 - 22 OZ.
 RELEASE FORCE ----- 10 OZ. MIN.
 DIFFERENTIAL TRAVEL ----- .002 - .0075
 OVERTRAVEL ----- .010 MIN.

ELECTRICAL DATA

CONTACT ARRANGEMENT S.P.D.T.	BREAK DISTANCE 020 MIN.
L23	20A 125, 250 OR 480 VAC 10A 125 VAC "L"
L288	1HP 125 VAC, 2HP 250 VAC
L308	1/2A 125 VDC, 1/4A 250 VDC
L315	

CE

20(3)A 250V T85 5E4

SCALE - FULL

DO NOT SCALE PRINT

UNLESS OTHERWISE SPECIFIED
 DIMENSIONS ARE IN INCHES

TOLERANCES ARE:

ONE PLACE (.0)	±.030
TWO PLACE (.00)	±.015
THREE PLACE (.000)	±.005
ANGLES	±

WEIGHT 050 LB.

FORMTEK

DRAWN

K.A.F. 20MARCH56