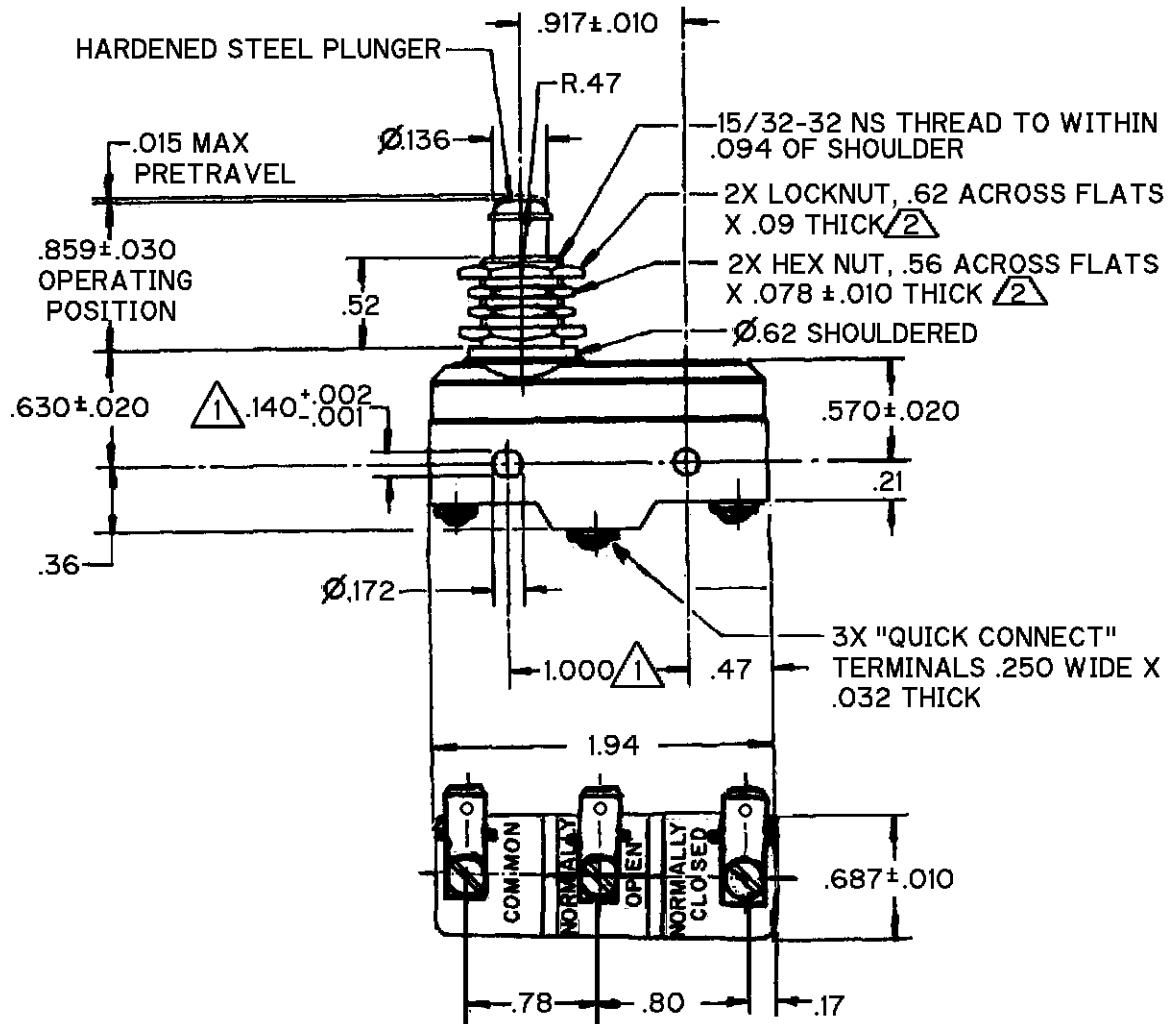


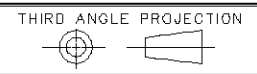
X111804-BZ

CATALOG LISTING
BZ-2RQ1-D682
 PAGE 1 OF 1
 ISSUE **2**
 REVISIONS
A CO-95312
 J J A
 15 JULY 99
 CHECK
 J A F 17 MAY 99
 CHECK
 J J A 17 MAY 99
 DRAWN
 FORMTEK



- NOTES**
- ① MOUNTING HOLES WILL ACCEPT PINS OR SCREWS OF Ø.139 MAX ON 1.000 ± .002 CENTERS
 - ② HARDWARE FURNISHED UNASSEMBLED

THIS DRAWING COVERS A PROPRIETARY ITEM AND IS THE PROPERTY OF MICRO SWITCH, A DIVISION OF HONEYWELL. THIS DRAWING IS NOT TO BE COPIED OR USED WITHOUT THE APPROVAL OF MICRO SWITCH.



CHARACTERISTICS	ELECTRICAL DATA	SCALE FULL	DO NOT SCALE PRINT
OPERATING FORCE ----- 9 - 13 OZ	CONTACT ARRANGEMENT S P D T	UNLESS OTHERWISE SPECIFIED TOLERANCES ARE	ONE PLACE (.0) ± .030
RELEASE FORCE ----- 4 OZ MIN	L96 15A 125, 250 OR 480 VAC 1/8HP 125 VAC, 1/4HP 250 VAC 1/2A 125 VDC, 1/4A 250 VDC		TWO PLACE (.00) ± .015
DIFFERENTIAL TRAVEL --- .0004-.002	CE Ⓟ RUL Ⓢ	THREE PLACE (.000) ± .005	ANGLES ±
OVERTRAVEL ----- .219 MIN	L288 L299 L306 16A 250V ~ T85 5E4	WEIGHT .094 LB	