

MICRO SWITCH

A DIVISION OF MINNEAPOLIS-HONEYWELL REGULATOR COMPANY
 PROPOSP, MINNAPOLIS
 FED. MFR. CODE 91929

SWITCH - BASIC

CATALOG LISTING
BZ-2RW82215T

BZ-2RW82215T

PAGE 1 OF 1

M

DRAWING NUMBER

9

ISSUE

REPLACES

RELEASE NO.

CHECK

REVISIONS

A	CO 16736	GCH 10 APRIL 62
B	CO 34306	GLH 8 JUL 75
C	CO- 69351-D	JWB 18 JUL 91
D	CO 70184-H	GRT 2 JUN 92
E	CO- 75204B	DAW 1 FEB 94
F	CO- 77589	MAM 29 MAR 94
G	CO93346	DLT 14 AUG 98

CHECK

4 MAY 62

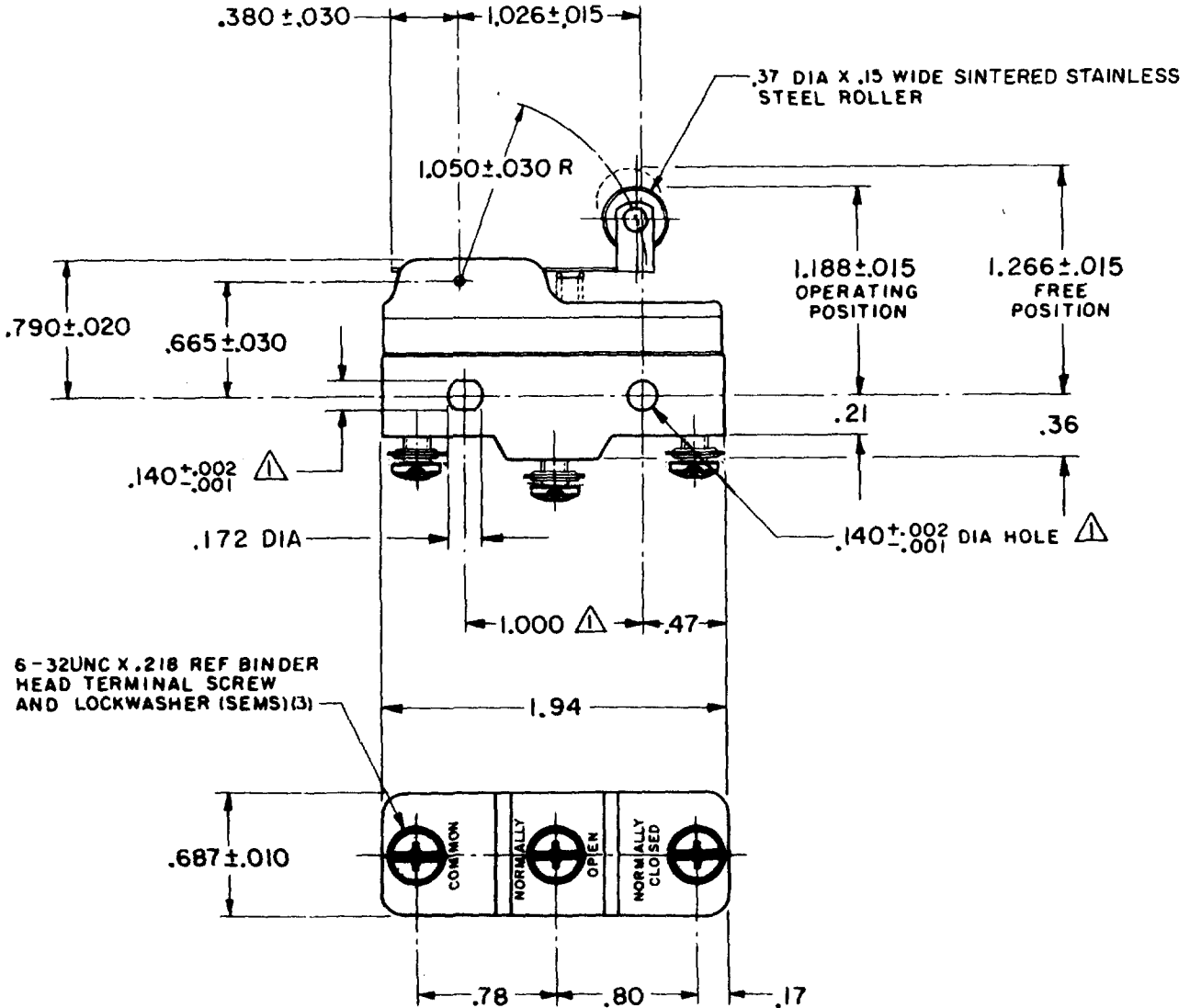
DAW

CHECK

10 APRIL 62

DRAWN

GCH



NOTE
 ▲ - MOUNTING HOLES WILL ACCEPT PINS OR SCREWS
 OF .139 MAX DIA ON 1.000 ± .002 CENTERS

THIS DRAWING COVERS A PROPRIETARY ITEM AND IS THE PROPERTY OF MICRO SWITCH, A DIVISION OF MINNEAPOLIS-HONEYWELL REGULATOR CO. THIS DRAWING IS NOT TO BE COPIED OR USED WITHOUT THE APPROVAL OF MICRO SWITCH.

CHARACTERISTICS

OPERATING FORCE ----- 6 OZ MAX
 RELEASE FORCE ----- 1 1/2 OZ MIN
 DIFFERENTIAL TRAVEL ----- .003 - .020
 OVERTRAVEL ----- .094 MIN

ELECTRICAL DATA

CONTACT ARRANGEMENT
 S P D T

UNDERWRITERS' LAB. INC. LISTED RATING
 -L9- 10A -125, 250, OR 480 VAC
 -L288- 1/2A -125 VDC, 1/4A - 250 VDC

SCALE FULL

DO NOT SCALE PRINT

UNLESS OTHERWISE SPECIFIED
 DIMENSIONS ARE IN INCHES
TOLERANCES ARE:
 ONE PLACE (.0) ±.030
 TWO PLACE (.00) ±.018
 THREE PLACE (.000) ±.008
 ANGLES ±

WEIGHT .076 LB

