

MICRO SWITCH

FREEPORT ILLINOIS, U.S.A
A DIVISION OF HONEYWELL
FED. MFG. CODE 91929

SWITCH-BASIC

CATALOG LISTING

BZ-2RW8255516-A2

M BZ-2RW8255516-A2

PAGE 1 OF 1

REPLACES X73375-BZ

RELEASE NO. PR-10882

DRAWING NUMBER

6

ISSUE

REVISIONS

A	CO67209	J A P	2 MAY 90
B	CO-73287-J	J A L	22 NOV 93
C	CO-75204B	JWB	1 FEB 94
D	CO-77589	MAM	29 MAR 94
E	CO93346	DLT	18 SEP 98

CHECK

CHECK

75 JAN 92

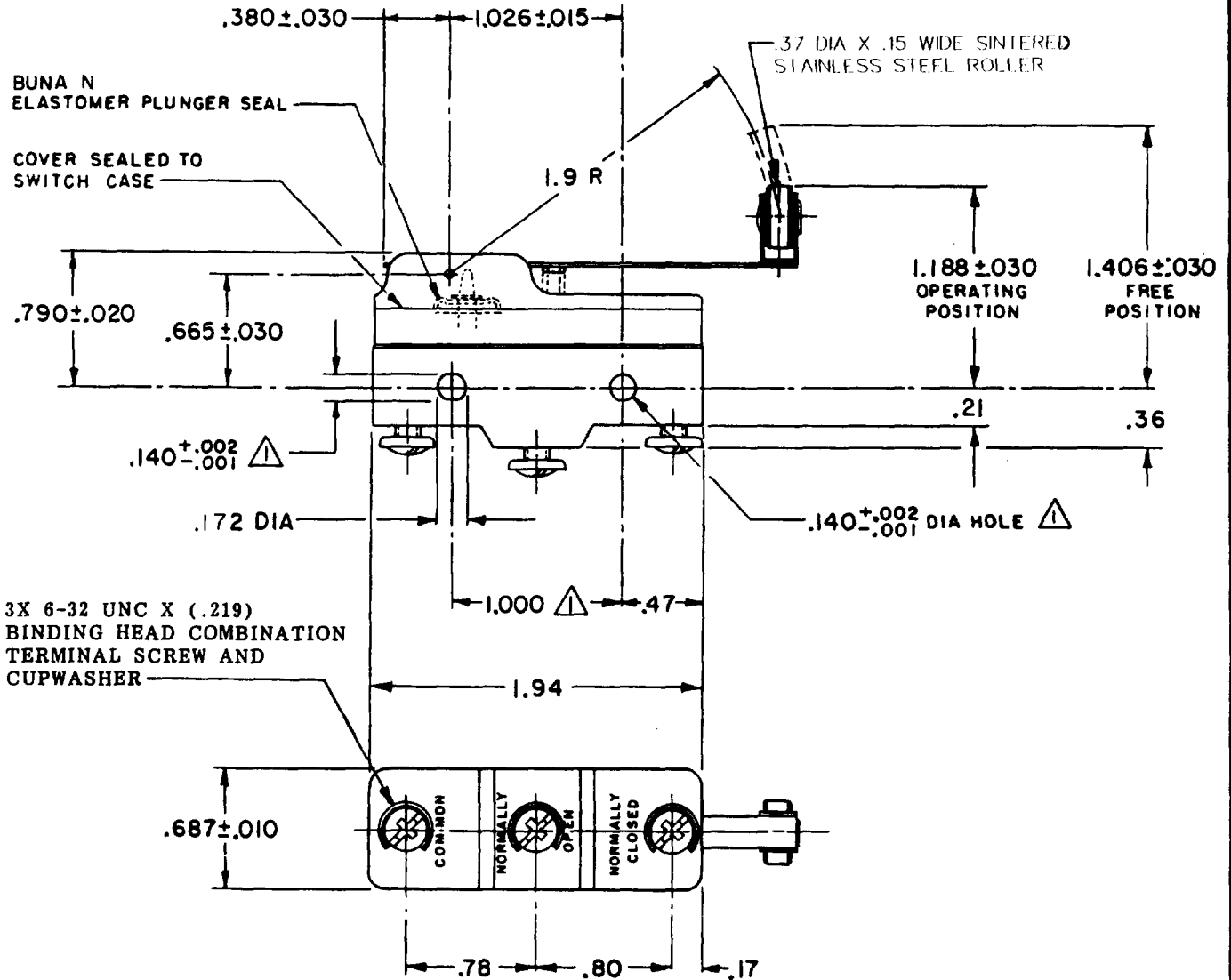
CHECK

WJM 25 JAN 82

FORMTEK

FO-52848-A

DRAWN

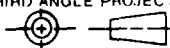


NOTES

- ▲ MOUNTING HOLES WILL ACCEPT PINS OR SCREWS OF .139 MAX DIA ON 1.000±.002 CENTERS
- 2 - SEALED CONSTRUCTION PROVIDES SPLASH RESISTANCE

THIS DRAWING COVERS A PROPRIETARY ITEM AND IS THE PROPERTY OF MICRO SWITCH, A DIVISION OF HONEYWELL. THIS DRAWING IS NOT TO BE COPIED OR USED WITHOUT THE APPROVAL OF MICRO SWITCH.

THIRD ANGLE PROJECTION



CHARACTERISTICS

OPERATING FORCE ---- 3 1/2 OZ MAX
RELEASE FORCE ---- 3/4 OZ MIN
DIFFERENTIAL TRAVEL ---- .004 - .040
OVERTRAVEL ---- .155 MIN

ELECTRICAL DATA

CONTACT ARRANGEMENT
S P D T
L96 15A 125, 250 OR 480 VAC
1/8 HP 125 VAC, 1/4 HP 250 VAC
1/2A 125 VDC, 1/4A 250 VDC
L288
L299
L306
CE D RJ

SCALE FULL

DO NOT SCALE PRINT

APPLY TO DESIGN UNITS. CONVERSIONS ARE ONLY FOR REFERENCE. UNLESS NOTED, TOLERANCES ARE ±

DIM.	TOL.	DIM.	TOL.
mm	mm/in	in	mm/in
NO PLACES	X	1/100	
ONE PLACE	X,X	0.01/018	X X
TWO PLACES	X,XX	0.15/006	X XX
THREE PLACES	X,XXX	0.13/005	X XXX

DESIGN UNITS SI METRIC US CUSTOMARY

WEIGHT .066 LB