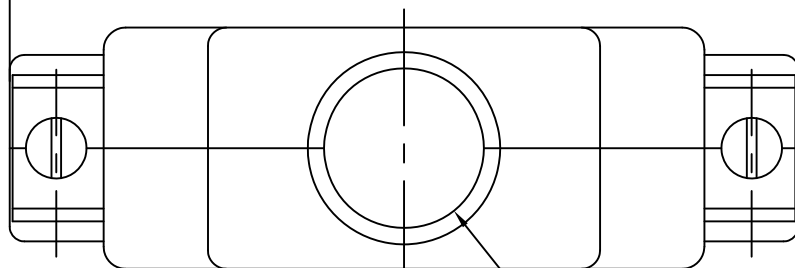


1

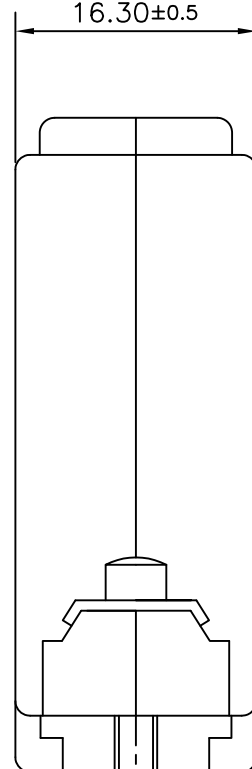
2

4	8630-CH25UNCLF	UNC 440
3	8630-CH25M3LF	M3
2	8630-CH25UNC	UNC 440
1	8630-CH25M3	M3
SL.NO.	PART NO:	THREAD

53.04±2.0

CABLE ENTRY  $\phi 11.0$  MAX.

16.30±0.5



THREAD

44.7±4.0

47.04±0.60

"This LF product meets European Union Directives and other country regulations as described in GS-47-0004"

Packaging as per GS-14-920

**MATERIAL:-**

1. NYLON 6 30% GF UL 94V-0 (OPTIONAL)
2. ABS UNFILLED UL 94 HB (STANDARD)
3. TEMP RANGE -55°C +85°C

mat'l. code				surface ISO 1302 ✓	tolerance ISO 406 ISO 1101	projection 	product family D-SUB			
ltr	ecn no	dr	date	tolerances unless otherwise specified		MM 	title  CONNECTOR HOOD 25 POS			
E	I06-0074	MINI	2006/06/08	angles	linear					
F	I10-0122	AMR	2010/05/29	0°±1°						
G	I10-0231	AMR	2010/11/27			scale -	dwg no sheet 1 of 1 size C-DSUB-0024 A4			
H	ELX-I-15622	MP	2013/08/24	dr	MINI K VANDANATH	1995/24/03				
				enr	MITHUN PAUL	2013/08/24				
				chr	MITHUN PAUL	2013/08/24	type Product Customer Drawing			
				app	BIJU K PAUL	2013/08/24				
sheet index	revision	H								
	sheet	1								

form: A4

1

2