



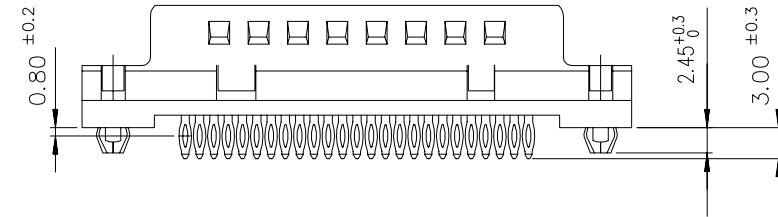
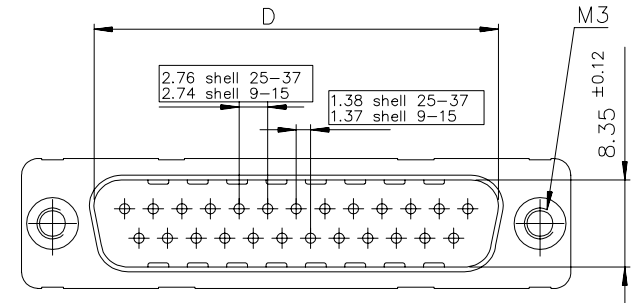
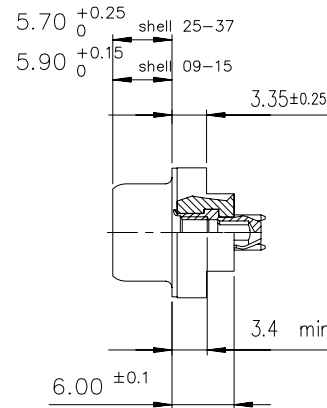
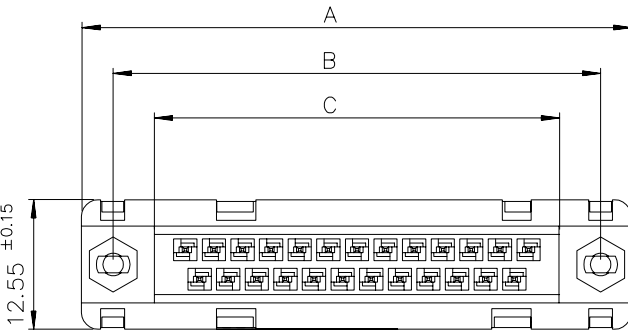
Copyright FCI

A

B

C

D



TIN LEAD PART NUMBER

SHELL	A±0.38	B±0.12	C±0.10	D±0.25	E±0.07	PART NUMBER
09	30.81	24.99	16.96	16.79	10.96	D09P91C*GL00
15	39.14	33.32	25.18	25.12	19.18	D15P91C*GL00
25	53.03	47.04	39.12	38.84	33.12	D25P91C*GL00
37	69.32	63.50	55.68	55.30	49.68	D37P91C*GL00

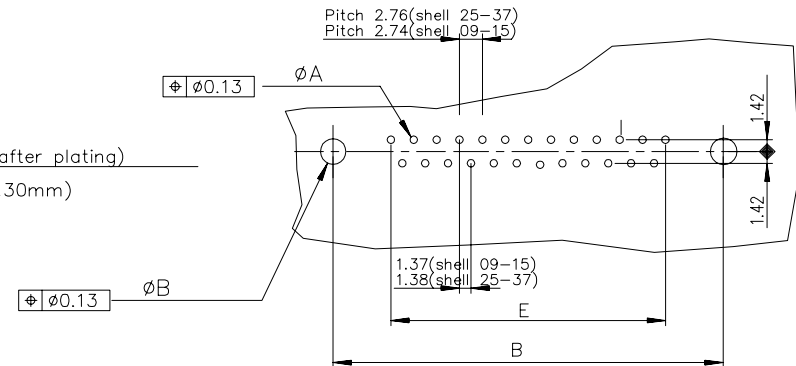
Plating: 4 --> 200 Mating
Plating: 6 --> 500 Mating
Plating: 8 --> 1.25µ Equivalent PdNi/Au

LEAD FREE PART NUMBER

SHELL	A±0.38	B±0.12	C±0.10	D±0.25	E±0.07	PART NUMBER
09	30.81	24.99	16.96	16.79	10.96	D09P91C*GL00LF
15	39.14	33.32	25.18	25.12	19.18	D15P91C*GL00LF
25	53.03	47.04	39.12	38.84	33.12	D25P91C*GL00LF
37	69.32	63.50	55.68	55.30	49.68	D37P91C*GL00LF

Plating: 4 --> 200 Mating
Plating: 6 --> 500 Mating
Plating: 8 --> 1.25µ Equivalent PdNi/Au




PC board drilling dimensions(after plating)
(thickness ≤ 3.20±0.30mm)



GENERAL CHARACTERISTICS AND ROHS INFORMATIONS:

SEE DRAWING C01-8646-0001

European Views

www.fciconnect.com			surface ISO 1302		tolerance std ISO 406 ISO 1101		projection 		mm 	
TOLERANCES UNLESS OTHERWISE SPECIFIED										
Dr	JARRY	1994-09-21	ANGULAR	LINEAR	0.X	±0.1	size	Scale		
Eng	PESSON	1994-09-21			0.XX	±0.1	A3		2	
Chr	NIRMAL GEORGE	2009-11-24	0.XX ±2		0.XXX	±0.1	ECN		I11-0062	
Appr	SUDHIR VARMA	2009-11-24	Product family				D-SUB	Spec ref -		
			title MALE CONNECTOR DELTA D STD EUROPE straight press-fit				dwg no C01-8646-0311			Rev. K
catalog no			-				CUSTOMER		sheet 1 of 1	