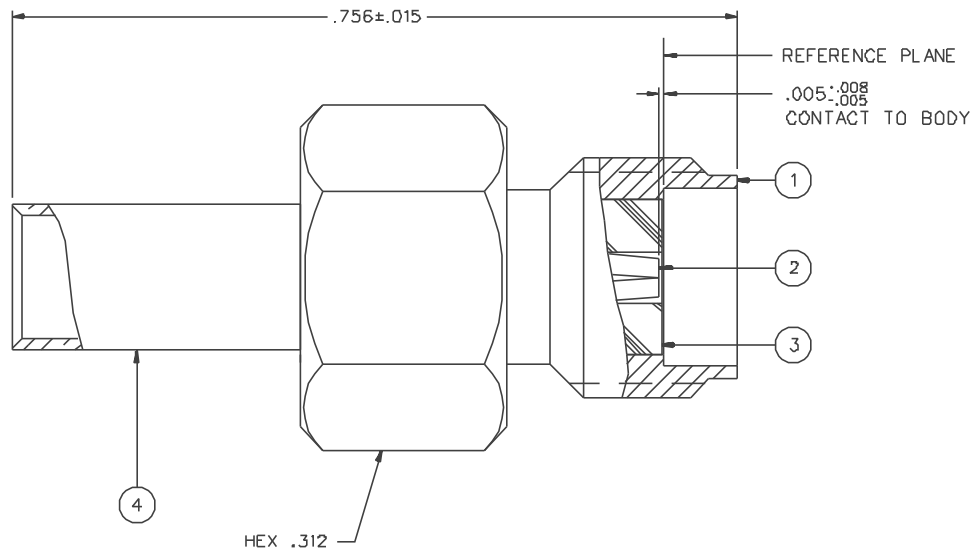


| PART NUMBER  | ITEM ①<br>BCDY  | ITEM ②<br>CONTACT  | ITEM ③<br>INSULATOR | ITEM ④<br>CRIMP SLEEVE   |
|--------------|---|--|---------------------|--|
| 142-0303-011 | BRASS<br>GOLD PL .00001 MIN OVER<br>NICKEL PL .00005 MIN OVER<br>COPPER PL .00005 MIN | BERYLLIUM COPPER<br>GOLD PL .00005 MIN OVER<br>NICKEL PL .00005 MIN OVER<br>COPPER PL .00005 MIN | TEFLON              | COPPER<br>GOLD PL .00001 MIN OVER<br>NICKEL PL .00005 MIN OVER<br>COPPER PL .00005 MIN |
| 142-0303-016 | BRASS<br>NICKEL PL .0001 MIN OVER<br>COPPER PL .00005 MIN                             | BERYLLIUM COPPER<br>GOLD PL .00005 MIN OVER<br>NICKEL PL .00005 MIN OVER<br>COPPER PL .00005 MIN | TEFLON              | COPPER<br>NICKEL PL .0001 MIN OVER<br>COPPER PL .00005 MIN                             |



NOTES:

1. SPECIFICATIONS:

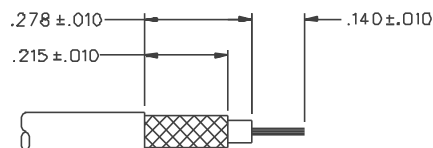
IMPEDANCE: 50 OHMS  
 FREQUENCY RANGE: 0-12.4 GHz  
 VSWR: 1.15-.02F MAX (F IN GHz)  
 WORKING VOLTAGE: 250 VRMS MAX AT SEA LEVEL  
 DIELECTRIC WITHSTANDING VOLTAGE: 750 VRMS MIN AT SEA LEVEL  
 INSULATION RESISTANCE: 5000 MEGOHM MIN  
 CONTACT RESISTANCE:  
 CENTER CONTACT - INITIAL 3.0 MILLIOHM MAX, AFTER ENVIRONMENTAL 4.0 MILLIOHM MAX  
 OUTER CONDUCTOR - INITIAL 2.0 MILLIOHM MAX AFTER ENVIRONMENTAL NOT APPLICABLE  
 BODY TO CABLE - 0.5 MILLIOHM MAX (GOLD PLATED)  
 5.0 MILLIOHM MAX (NICKEL PLATED)  
 CORONA LEVEL: 190 VOLTS MIN AT 70,000 FEET  
 INSERTION LOSS: .06 √F dB MAX (F IN GHz) AT 6 GHz  
 RF LEAKAGE: -60 DB MIN AT 2.5 GHz  
 RF HIGH POTENTIAL WITHSTANDING VOLTAGE: 500 VRMS MIN AT 4 AND 7 MHz

MECHANICAL:

ENGAGE/DISENGAGE TORQUE: 2 INCH-POUNDS MAX  
 MATING TORQUE: 7-10 INCH POUNDS  
 COUPLING PROOF TORQUE: NOT APPLICABLE  
 COUPLING NUT RETENTION: NOT APPLICABLE  
 CONTACT RETENTION: 6 LBS MIN  
 CABLE ACCEPTABILITY: RG 18B/U, RG 316/U  
 RC 161/U, RC 174/U  
 CABLE HEX CRIMP SIZE: .12B  
 CONTACT CRIMP TOOL: P/N 144-00DD-91D WITH POSITIONER 141-0000-907  
 CABLE RETENTION: 20 LBS MIN AXIAL FORCE  
 DURABILITY: 500 CYCLES MIN

ENVIRONMENTAL:

(MEETS OR EXCEEDS THE APPLICABLE PARAGRAPH OF MIL-C-39012)  
 THERMAL SHOCK: MIL-STD-202, METHOD 107, CONDITION B, EXCEPT 85° C HIGH TEMP  
 OPERATING TEMPERATURE: -65° C TO 165° C  
 CORROSION: MIL-STD-202, METHOD 101, CONDITION B  
 SHOCK: MIL-STD-202, METHOD 213, CONDITION I  
 VIBRATION: ML-STD-202, METHOD 204, CONDITION D  
 MOISTURE RESISTANCE: MIL-STD-202, METHOD 106



CABLE STRIP DIMENSIONS

4:1


|  |         |                        |                      |
|--|---------|------------------------|----------------------|
| DRAWING NO.                              |         |                        |                      |
| C - 142-0303-011/020                     |         |                        |                      |
| 0 REVISIONS                              |         |                        |                      |
| ENGINEERING RELEASE                      |         |                        |                      |
| 1  | 8-28-92 | R H A K B              | 9-1-92<br>ECO 41221  |
| VERSION UPDATE                           |         |                        |                      |
| 1a                                       | 4-17-95 | R S I R F<br>H W A B A | 4-26-95<br>ECN 43193 |
| VERSION UPDATE                           |         |                        |                      |
| 1b                                       | 5-17-00 | R S S S S<br>H S S S H | 8-2-00<br>ECN 47111  |
| ADDED: CONTACT CRIMP TOOL P/N'S          |         |                        |                      |
| * REVISION NUMBER FOLLOWED BY AN ALPHA * |         |                        |                      |
| * CHARACTER INDICATED DRAWING CLARIFY *  |         |                        |                      |
| * CATION OR PART NUMBER ADDITION ONLY *  |         |                        |                      |
| 1c                                       | 11-7-DD | R K I R<br>H A K B     | ECN 4731B            |

CUSTOMER DRAWING

THIS DRAWING TO BE INTERPRETED PER ANSIZ 14.5M - 1982

"μSTATION"

COMPANY CONFIDENTIAL

|                                      |                    |                 |  |                                      |
|--------------------------------------|--------------------|-----------------|--|--------------------------------------|
| TOLERANCE UNLESS OTHERWISE SPECIFIED | DRAWN BY<br>TAK    | DATE<br>5-14-92 |  299 Johnson Ave.<br>P.O. Box 1732<br>Waseca, MN 56093-0832 |                                      |
| DECIMALS<br>.XX                      | CHECKED BY         | DATE            | TITLE<br>JACK ASSEMBLY<br>STRAIGHT CABLED<br>SMA, RG 316   |                                      |
| .XXX REF                             | APPROVED BY<br>TAK | DATE<br>8-28-92 | CODE NO.   | DRAWING NO.<br>C - 142-0303-011/020  |
| MATL                                 | APPROVED BY<br>RJB | DATE<br>8-28-92 | RELEASE DATE<br>9-1-92   | SCALE 10:1   U/M INCH   SHEET 2 OF 2 |
| FINISH                               |                    |                 |  |                                      |