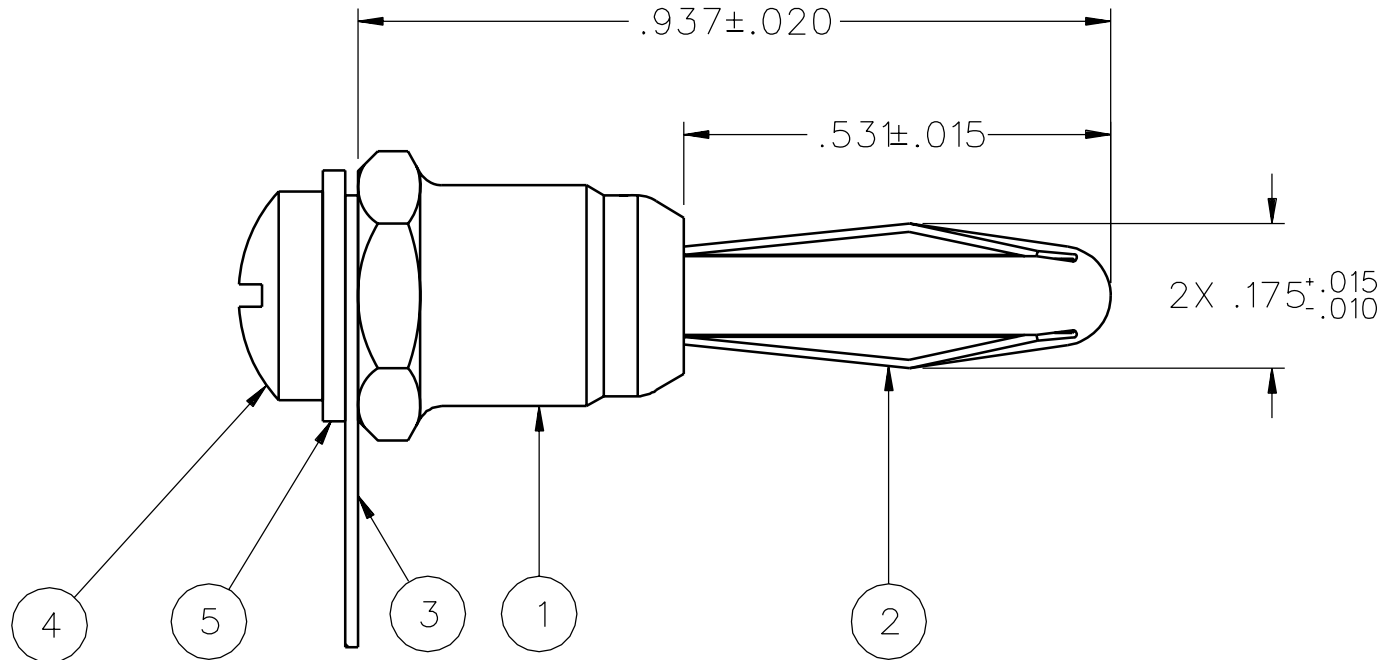
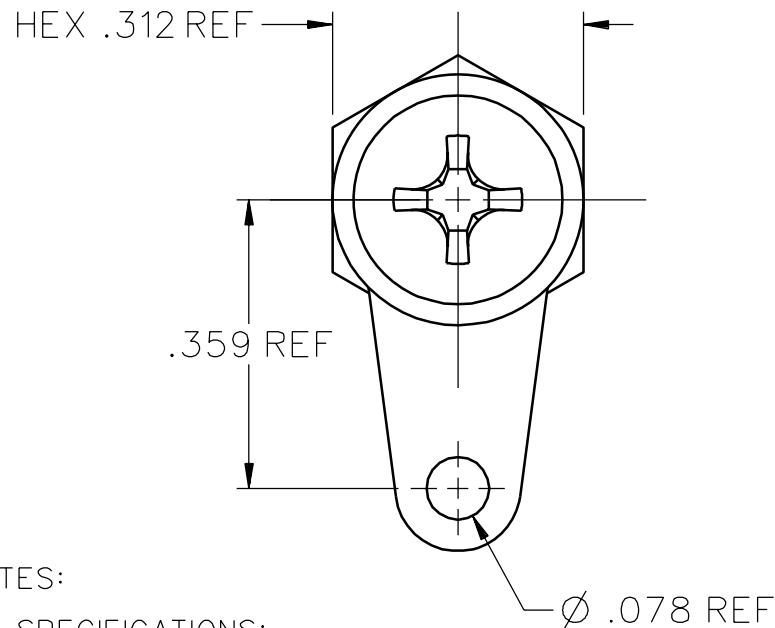


	ITEM ①	ITEM ②	ITEM ③	ITEM ④	ITEM ⑤
PART NUMBER	BODY (2 PIECE)	SPRING	SOLDER LUG	SCREW	WASHER
108-0753-001	BRASS NICKEL PL .0001 MIN	BERYLLIUM COPPER NICKEL PL .0001 MIN	COPPER TIN PL .0001 MIN	BRASS NICKEL PL .0001 MIN	BRASS NICKEL PL .0001 MIN



NOTES:

1. SPECIFICATIONS:

ELECTRICAL:

CURRENT RATING: 15 AMPS DC MINIMUM
DIELECTRIC WITHSTANDING VOLTAGE: NOT APPLICABLE
RECOMMENDED WORKING VOLTAGE: NOT APPLICABLE
INSULATION RESISTANCE: NOT APPLICABLE
CONTACT RESISTANCE: 10 MILLIOHMS MAXIMUM

MECHANICAL:

INSERTION/WITHDRAWAL FORCE: 1.0 - 15.0 POUNDS
CONTACT SPRING RETENTION FORCE: 25 POUNDS MINIMUM
WIRE ACCEPTABILITY: NOT APPLICABLE
WIRE ATTACHMENT: NOT APPLICABLE
MATING BANANA JACK DIAMETER: .166 NOMINAL
DURABILITY: 1000 CYCLES MINIMUM

ENVIRONMENTAL:

(MEETS OR EXCEEDS THE APPLICABLE PARAGRAPH OF MIL-C-28901)
OPERATING TEMPERATURE: -55 DEG C TO 85 DEG C.
TEMPERATURE RISE AT RATED CURRENT: 10 DEG C MAXIMUM
CORROSION: MIL-STD-1344, METHOD 1001, CONDITION B
SHOCK: MIL-STD-1344, METHOD 2004, CONDITION G
VIBRATION: MIL-STD-1344, METHOD 2005, CONDITION I
HUMIDITY: MIL-STD-1344, METHOD 1002, CONDITION B

DRAWING NO.				
B - 108-0753-001				
0	REVISIONS			
ENGINEERING RELEASE				

* REVISION NUMBER FOLLOWED BY AN ALPHA *				
* CHARACTER INDICATES DRAWING CLARIFI-				
* CATION OR PART NUMBER ADDITION ONLY. *				


24b	11-21-94	R H	S W T A K	R J B
ECN 42912				

CUSTOMER DRAWING

THIS DRAWING TO BE INTERPRETED
PER ANSI Y 14.5M - 1982

"I/EMS"

COMPANY CONFIDENTIAL

TOLERANCE UNLESS OTHERWISE SPECIFIED		DRAWN BY SWC	DATE 8-26-94	<div>Connectivity Solutions P.O. Box 1732 Waseca, MN 56093 1-800-247-8256</div>	
DECIMALS .XX	mm	CHECKED BY SWC	DATE 12-7-94		
.XXX		APPROVED BY TAK	DATE 12-20-94	TITLE ASSEMBLY, BANANA PLUG UNINSULATED, HEX BODY THREADED BACKHOLE	
MATL		RELEASE DATE			
FINISH		U/M	INCH	SCALE	4:1
			</		