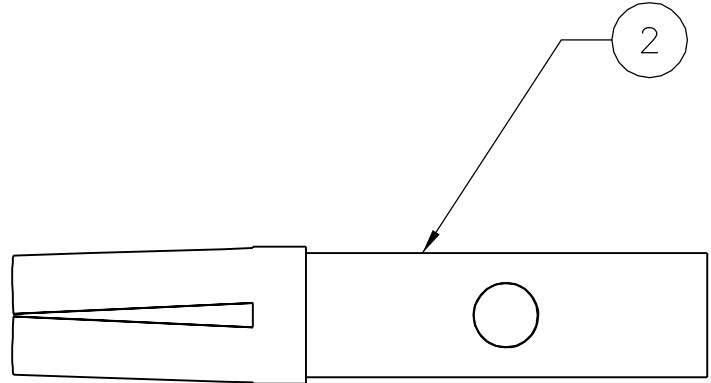
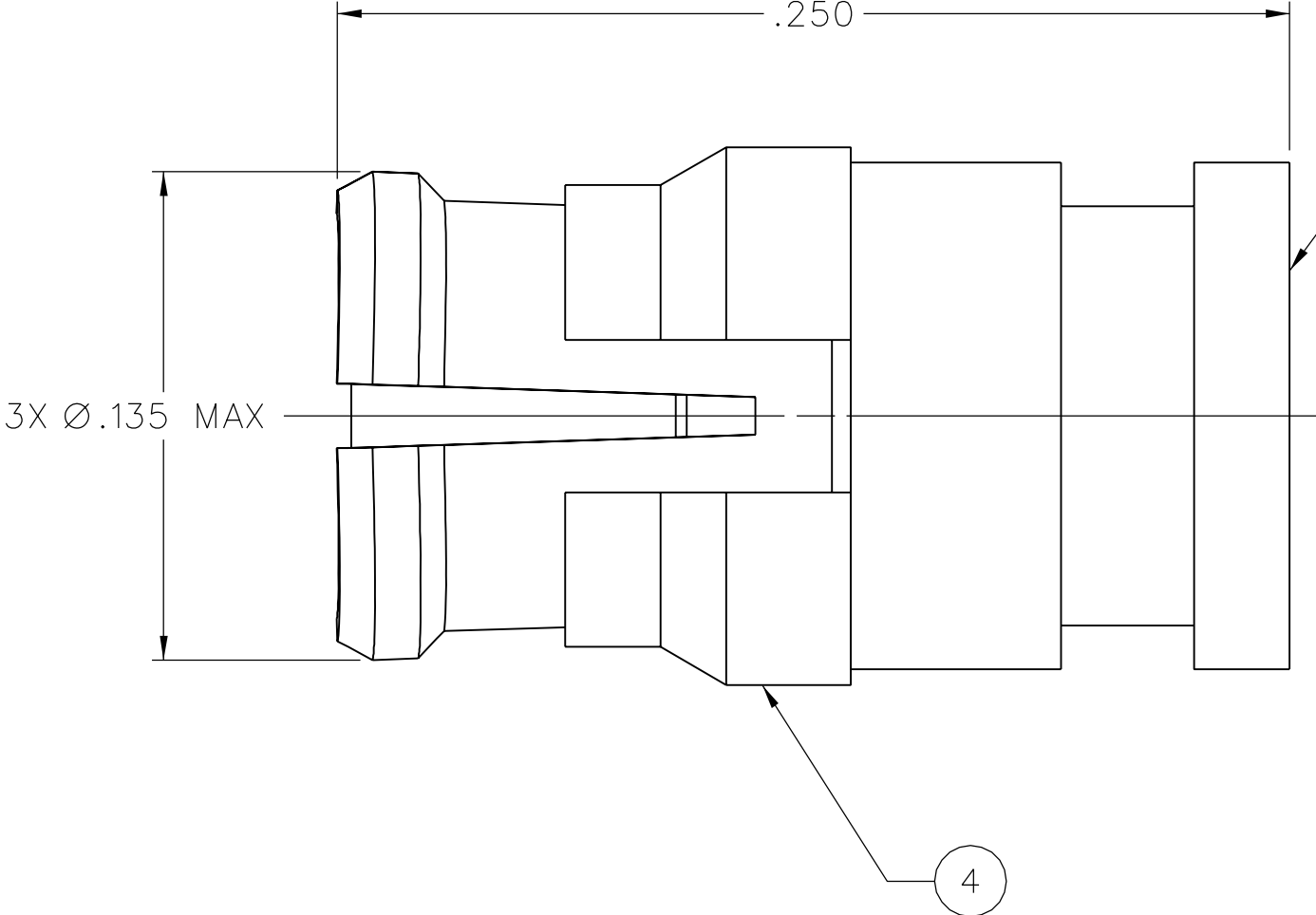
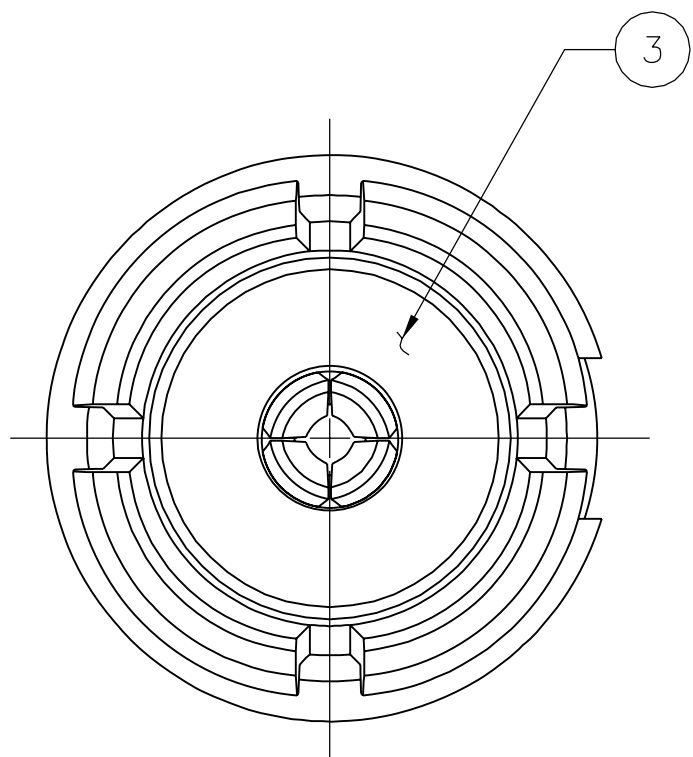
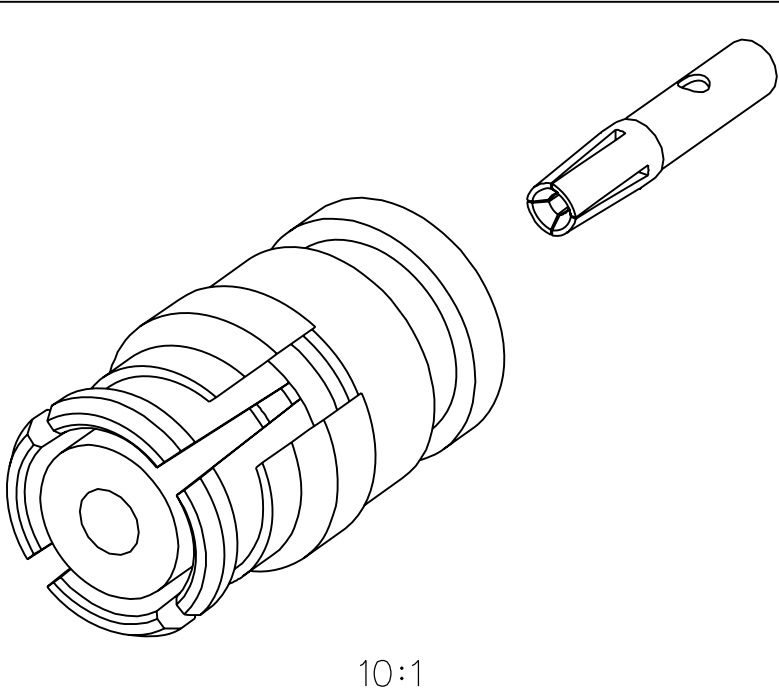


	ITEM ①	ITEM ②	ITEM ③	ITEM ④
PART NUMBER	BODY	CONTACT	INSULATOR	ANTI-ROCK RING
127-0693-001	BERYLLIUM COPPER GOLD PL .00005 MIN OVER NICKEL PL .00005 MIN OVER COPPER PL .00005 MIN	BERYLLIUM COPPER GOLD PL .00005 MIN OVER NICKEL PL .00005 MIN OVER COPPER PL .00005 MIN	TEFLON	BERYLLIUM COPPER GOLD PL .00003 MIN OVER NICKEL PL .00005 MIN OVER COPPER PL .00005 MIN



NOTES:

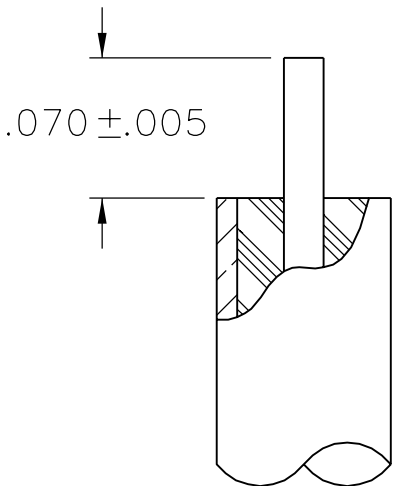
1. SPECIFICATIONS:
- IMPEDENCE: 50 OHMS NOMINAL
FREQUENCY RANGE: 0-40 GHz
VSWR: 1.20 MAX (0-18 GHz)
1.35 MAX (18-26.5 GHz)
1.70 MAX (26.5-40 GHz)
- WORKING VOLTAGE: 335 VRMS MAX AT SEA LEVEL
DIELECTRIC WITHSTANDING VOLTAGE: 500 VRMS MIN AT SEA LEVEL
INSULATION RESISTANCE: 5000 MEGOHM MIN
CONTACT RESISTANCE:
CENTER CONTACT - INITIAL 6.0 MILLIOHM MAX, AFTER ENVIRONMENTAL NOT APPLICABLE
OUTER CONDUCTOR - INITIAL 2.0 MILLIOHM MAX, AFTER ENVIRONMENTAL NOT APPLICABLE
CABLE SHIELD TO CONNECTOR BODY - INITIAL 0.5 MILLIOHM MAX, AFTER ENVIRONMENTAL NOT APPLICABLE
- INSERTION LOSS: $0.12\sqrt{f}$ (GHz) dB MAX, TESTED AT 10 GHz
CORONA LEVEL: 190 VOLTS MIN AT 70,000 FEET
RF LEAKAGE: -80 dB TYPICAL, TESTED AT 2.5 GHz
RF HIGH POTENTIAL WITHSTANDING VOLTAGE: 325 VRMS MIN AT 4 AND 7 MHz

MECHANICAL:

INTERFACE DESIGN: IN ACCORDANCE WITH MIL-STD-348A, SERIES SMP
ENGAGEMENT FORCE: 15.0 LBS MAX (FULL DETENT)
DISENGAGEMENT FORCE: 5.0 LBS MIN (FULL DETENT)
CONTACT RETENTION: NOT APPLICABLE
CABLE ACCEPTABILITY: MIL-C-17/133, RG 405/U
CABLE RETENTION: 30 LBS MIN AXIAL FORCE
16 IN-OUNCE MIN TORQUE
DURABILITY: 100 CYCLES MIN (FULL DETENT)

ENVIRONMENTAL:

(MEETS OR EXCEEDS THE APPLICABLE PARAGRAPH OF DSCC DWG NO. 94007)
OPERATING TEMPERATURE: -65°C TO 165°C
THERMAL SHOCK: MIL-STD-202, METHOD 107, CONDITION B, EXCEPT 125°C HIGH TEMP
MECHANICAL SHOCK: MIL-STD-202, METHOD 213, CONDITION I
CORROSION: MIL-STD-202, METHOD 101, CONDITION B
VIBRATION: MIL-STD-202, METHOD 204, CONDITION D
MOISTURE RESISTANCE: MIL-STD-202, METHOD 106, EXCEPT STEP 7B OMITTED



CABLE STRIP DIMENSIONS
10:1


DRAWING NO.	
C - 127-0693-001/010	
0	REVISIONS
ENGINEERING RELEASE	
1	7-27-07
PAT	JRK
PJC	WIN
7-30-07 ECN 5114.3	

CUSTOMER DRAWING

THIS DRAWING TO BE INTERPRETED
PER ASME Y 14.5M - 1994

"μSTATION"

COMPANY CONFIDENTIAL

TOLERANCE UNLESS OTHERWISE SPECIFIED		DRAWN BY PAT	DATE 3-29-07	 Connectivity Solutions P.O. Box 1732 Waseca, MN 56093 1-800-247-8256	
DECIMALS	mm	CHECKED BY XXX	DATE X		
.XX	_____			TITLE SMP FEMALE, STRAIGHT CABLED, RG-405 (.086) SEMI-RIGID	
.XXX ±.005	_____				
MATL _____		APPROVED BY XXX	DATE X	SHEET 2 OF 2	
FINISH _____		RELEASE DATE	X		
U/M	INCH	SCALE	20:1	DRAWING NO. C - 127-0693-001/010	