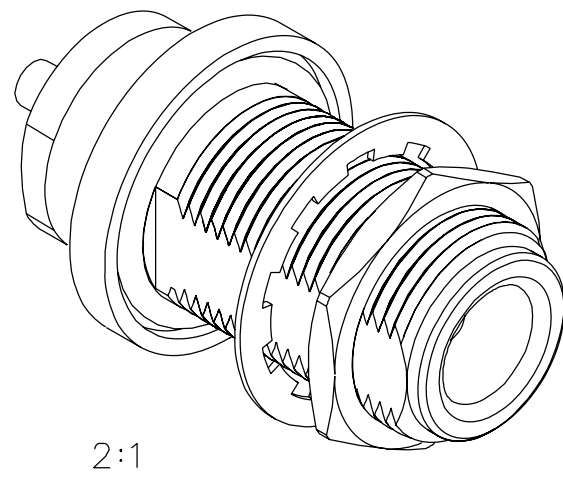
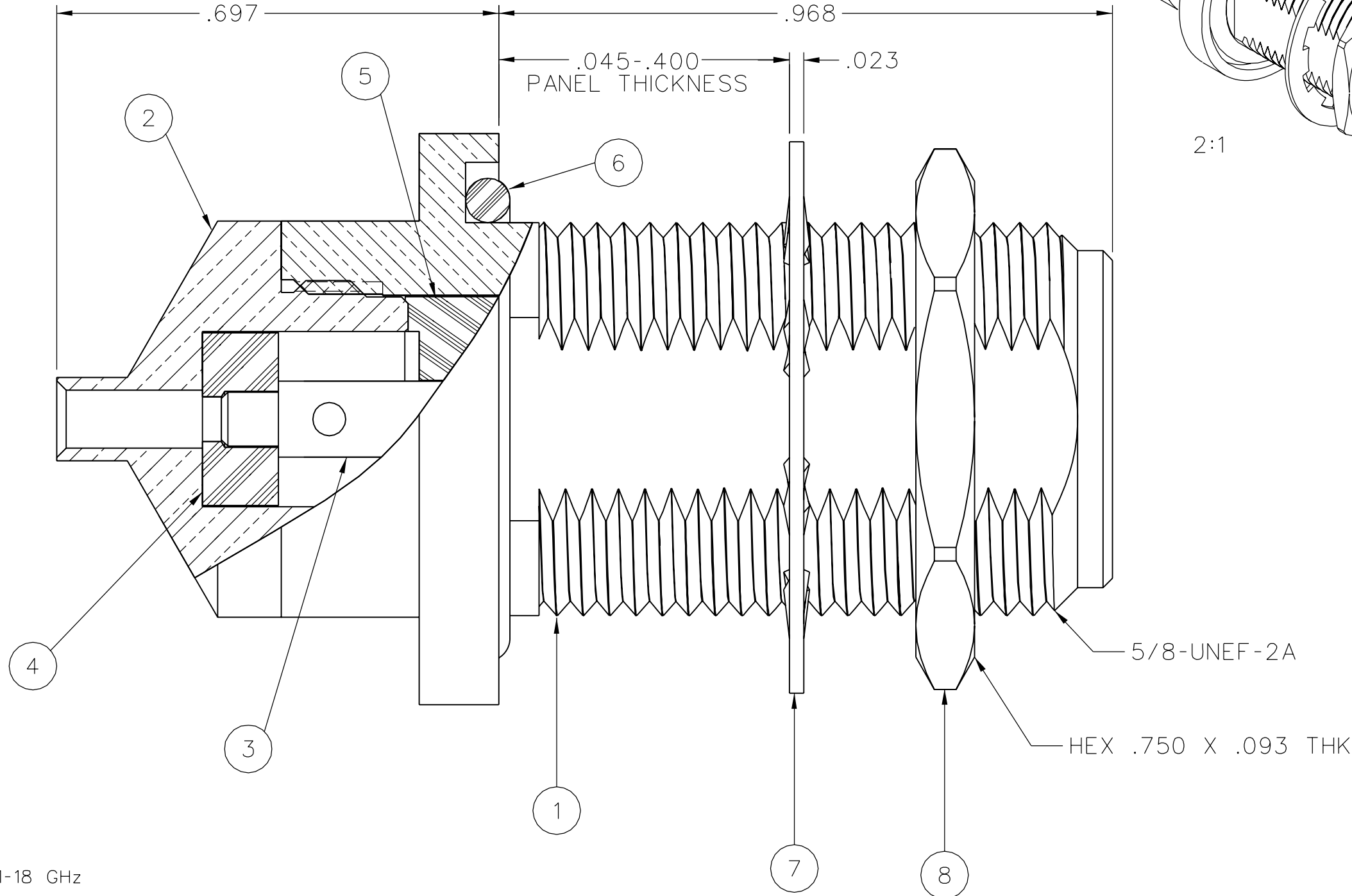
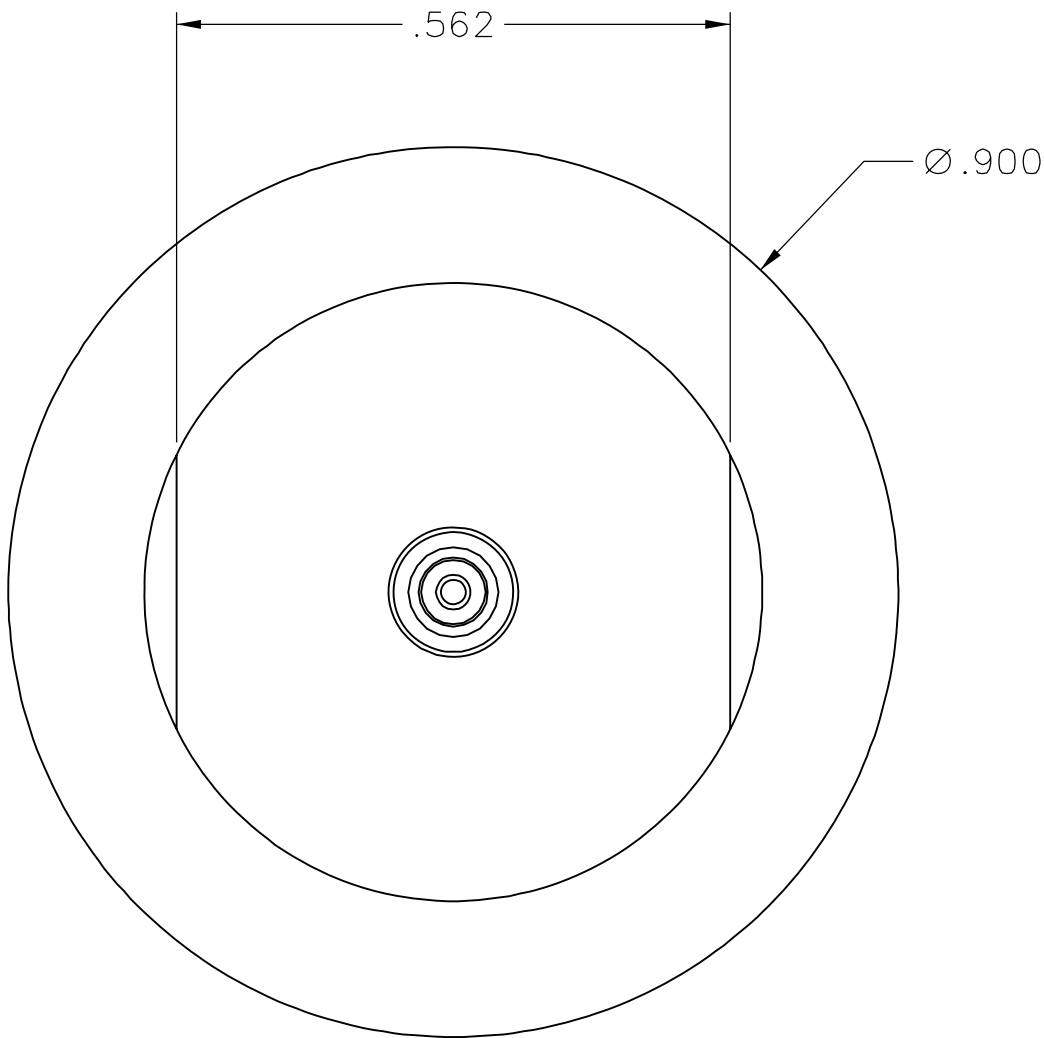


PART NUMBER	ITEM ① BODY	ITEM ② STEM	ITEM ③ CONTACT	ITEM ④ REAR INSULATOR	ITEM ⑤ FRONT INSULATOR	ITEM ⑥ O-RING	ITEM ⑦ LOCKWASHER	ITEM ⑧ MOUNTING NUT
138-4593-401	BRASS TRI-ALLOY PL .0001 MIN	BRASS GOLD PL .00001 MIN OVER NICKEL PL .00005 MIN OVER COPPER PL .00005 MIN	BERYLLIUM COPPER GOLD PL .00005 MIN OVER NICKEL PL .00005 MIN OVER COPPER PL .00005 MIN	TEFLON	TEFLON	SILICONE RUBBER	STEEL TRI-ALLOY .0001 MIN	BRASS NICKEL PL .0001 MIN OVER COPPER PL .00005 MIN



NOTES:

1. SPECIFICATIONS:

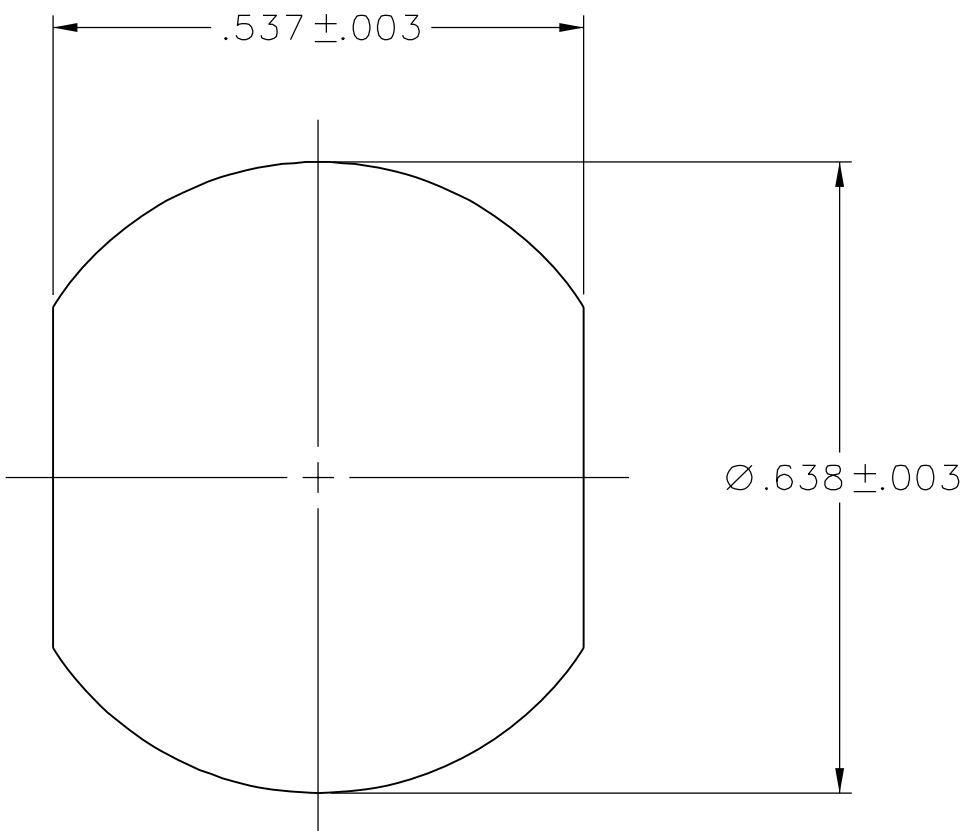
IMPEDANCE: 50 OHMS
FREQUENCY RANGE: 0-18 GHz
VSWR: 1.15+.02F (GHz) MAX AT 0-11 GHz, TYPICALLY < 1.50 AT 11-18 GHz
WORKING VOLTAGE: 335 VRMS MAX AT SEA LEVEL
DIELECTRIC WITHSTANDING VOLTAGE: 1000 VRMS MIN AT SEA LEVEL
INSULATION RESISTANCE: 5000 MEGOHM MIN
CONTACT RESISTANCE:
 CENTER CONTACT - INITIAL 1.0 MILLIOHM MAX, AFTER ENVIRONMENTAL 1.5 MILLIOHM MAX
 OUTER CONDUCTOR - INITIAL 0.2 MILLIOHM MAX, AFTER ENVIRONMENTAL NOT APPLICABLE
CORONA LEVEL: 250 VOLTS MIN AT 70,000 FEET
INSERTION LOSS: .05√F (GHz), TESTED AT 9 GHz
RF LEAKAGE: -90 dB MIN AT 2 TO 3 GHz
RF HIGH POTENTIAL WITHSTANDING VOLTAGE: 670 VRMS AT 4 AND 7 MHz
THIRD ORDER INTERMODULATION PRODUCT (IMP3): TYPICALLY < -90 dBm
 (TESTED PER IEC GUIDELINES WITH 20W CW INPUTS AT 1930-1990 MHz)

MECHANICAL:

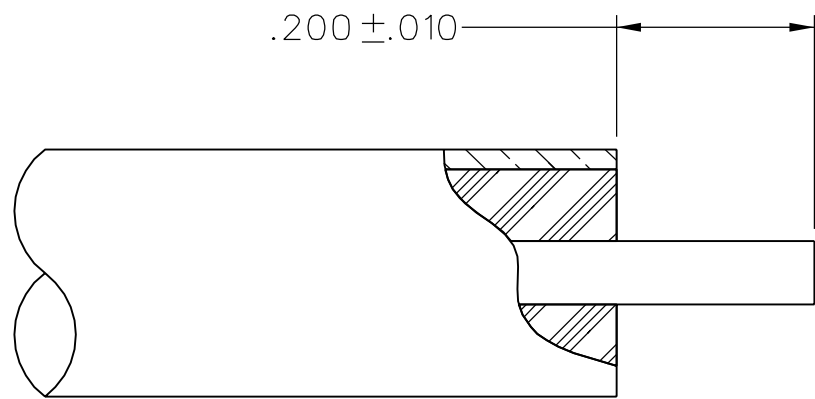
ENGAGE/DISENGAGE TORQUE: 6 IN-LBS MAX
MATING TORQUE: 7-10 IN-LBS
COUPLING PROOF TORQUE: NOT APPLICABLE
COUPLING NUT RETENTION: NOT APPLICABLE
CONTACT RETENTION: NOT APPLICABLE
CABLE ACCEPTABILITY: RG 405, .086 OD SEMIRIGID
CABLE HEX CRIMP SIZE: NOT APPLICABLE
CABLE RETENTION: 30 LBS MIN AXIAL FORCE
 16 IN-OZ MIN TORQUE
DURABILITY: 500 CYCLES MIN

ENVIRONMENTAL:

(MEETS OR EXCEEDS THE APPLICABLE PARAGRAPH OF MIL-PRF-39012)
THERMAL SHOCK: MIL-STD-202, METHOD 107, CONDITION B,
 EXCEPT 85°C HIGH TEMP
OPERATING TEMPERATURE: -65°C TO 165°C
CORROSION: MIL-STD-202, METHOD 101, CONDITION B
SHOCK: MIL-STD-202, METHOD 213, CONDITION I
VIBRATION: MIL-STD-202, METHOD 204, CONDITION B
MOISTURE RESISTANCE: MIL-STD-202, METHOD 106




MOUNTING HOLE



CABLE STRIP DIMENSIONS

NOT TO SCALE

TOLERANCE UNLESS OTHERWISE SPECIFIED		DRAWN BY	DATE	 Connectivity Solutions P.O. Box 1732 Waseca, MN 56093 1-800-247-8256	
DECIMALS	mm	JRK	11-7-05		
.XX	_____	CHECKED BY	DATE	TITLE	
.XXX	REF	PDW	4-11-06		
MATL	_____	APPROVED BY	DATE	ASSEMBLY, TYPE N BULKHEAD JACK RG405 (.086) S/R	
	_____	JRK	4-11-06		
FINISH	_____	RELEASE DATE	4-12-06	SHEET	DRAWING NO.
	_____	U/M	INCH	2 OF 2	C - 138-4593-401/410
		SCALE	5:1		

DRAWING NO.						
C - 138-4593-401/410						
0	REVISIONS					
ENGINEERING RELEASE						
1	12-21-05	P A T	J R K	P D W	M J U	4-12-06 ECN 50131
.045-.400 WAS .045-.125						
***** * REVISION NUMBER FOLLOWED BY AN ALPHA * * CHARACTER INDICATES DRAWING CLARIFI- * * CATION OR PART NUMBER ADDITION ONLY. * *****						
1a	9-15-06	P A T	J R K	P D W		9-21-06 ECN 50630
LOCKWASHER TRI-ALLOY WAS ZINC						
***** * REVISION NUMBER FOLLOWED BY AN ALPHA * * CHARACTER INDICATES DRAWING CLARIFI- * * CATION OR PART NUMBER ADDITION ONLY. * *****						
1b	2-8-07	P A T	J R K	P D W	M J U	2-15-07 ECN 50939

CUSTOMER DRAWING

THIS DRAWING TO BE INTERPRETED
PER ASME Y 14.5M - 1994

"μSTATION"

COMPANY CONFIDENTIAL