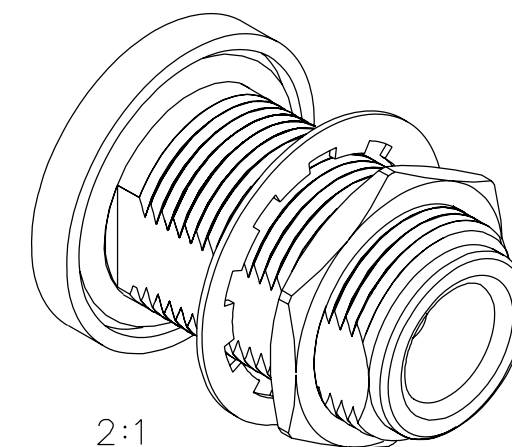
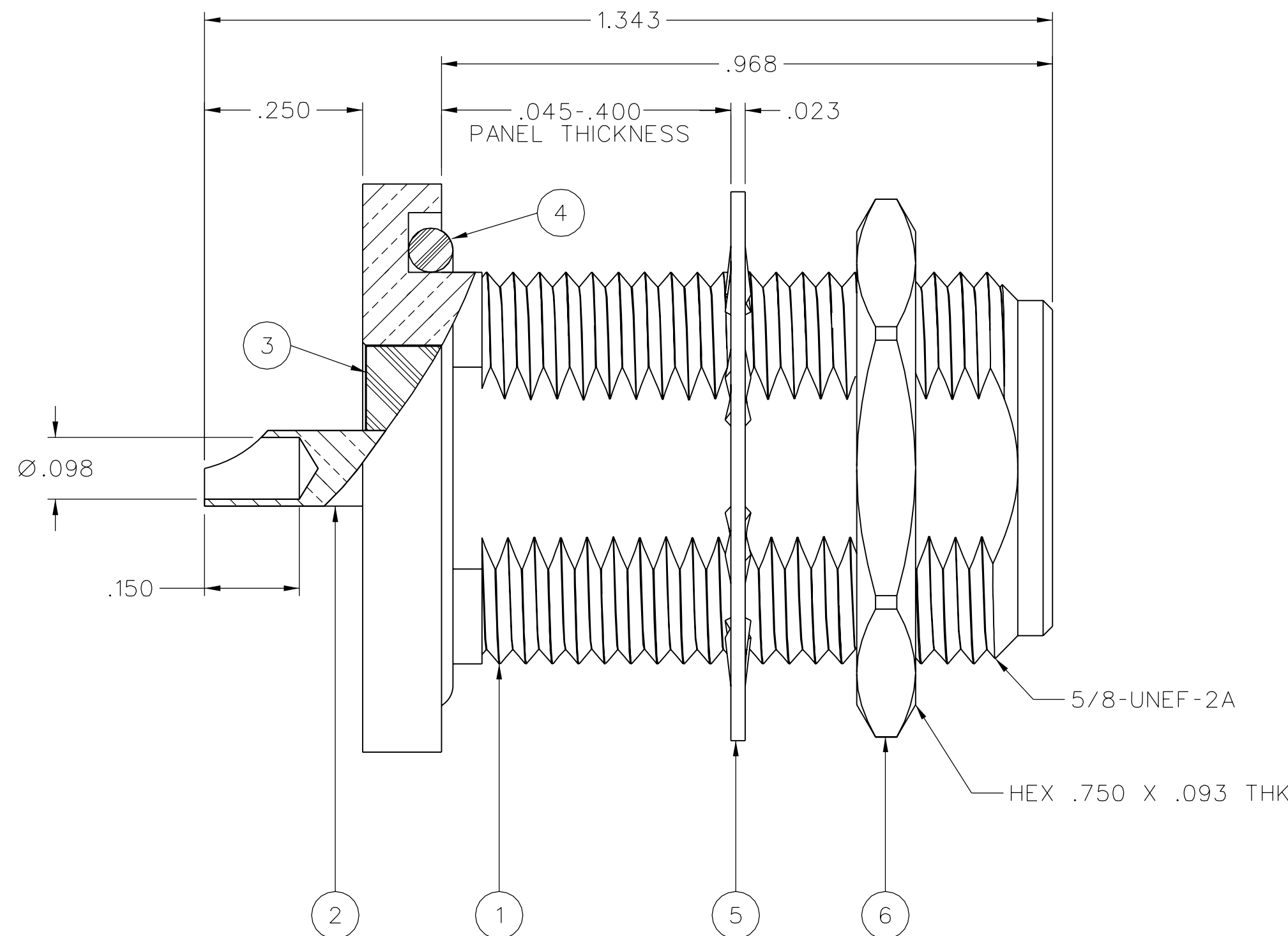


PART NUMBER	ITEM ① BODY	ITEM ② CONTACT	ITEM ③ FRONT INSULATOR	ITEM ④ O-RING	ITEM ⑤ LOCKWASHER	ITEM ⑥ MOUNTING NUT
138-4701-406	BRASS NICKEL PL .0001 MIN OVER COPPER PL .00005 MIN	BERYLLIUM COPPER GOLD PL .00005 MIN OVER NICKEL PL .00005 MIN OVER COPPER PL .00005 MIN	TEFLON	SILICONE RUBBER	STEEL TRI-ALLOY .0001 MIN	BRASS NICKEL PL .0001 MIN OVER COPPER PL .00005 MIN
138-4701-407	BRASS TRI-ALLOY PL .0001 MIN	BERYLLIUM COPPER GOLD PL .00005 MIN OVER NICKEL PL .00005 MIN OVER COPPER PL .00005 MIN	TEFLON	SILICONE RUBBER	STEEL TRI-ALLOY .0001 MIN	BRASS NICKEL PL .0001 MIN OVER COPPER PL .00005 MIN



2:1



NOTES:

1. SPECIFICATIONS:

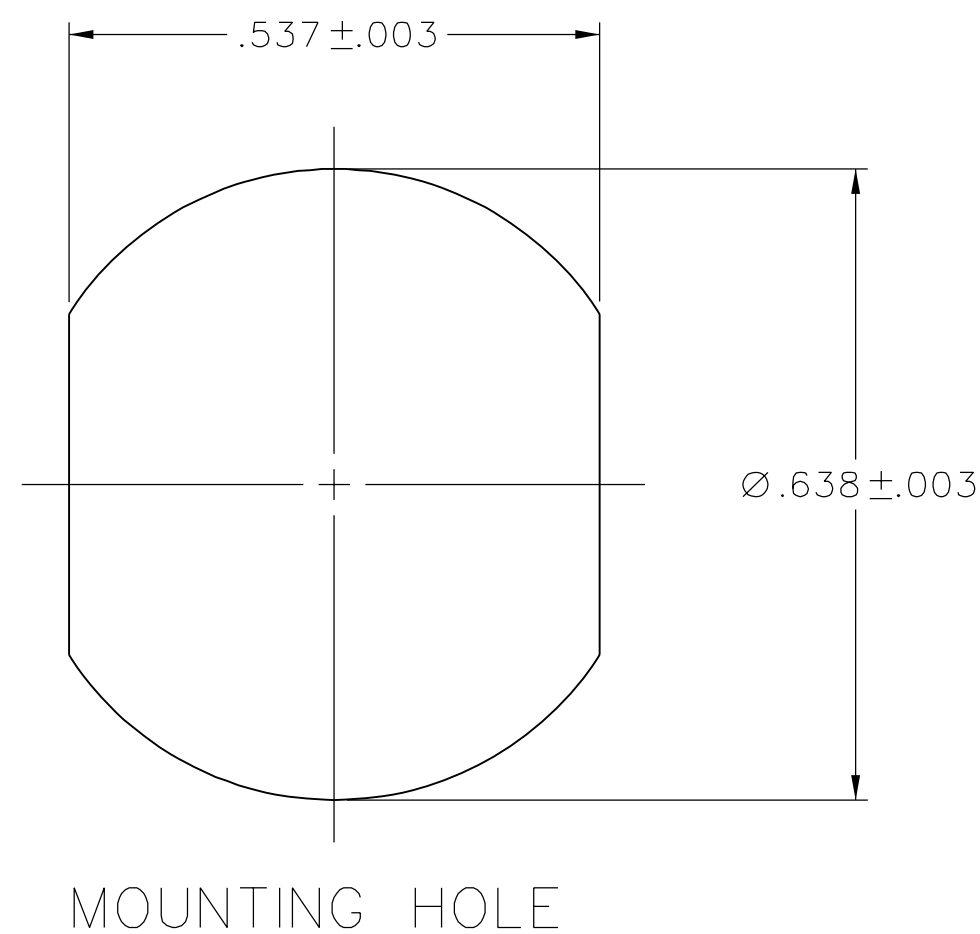
IMPEDANCE: 50 OHMS
FREQUENCY RANGE: 0-11 GHz
VSWR: NOT APPLICABLE
WORKING VOLTAGE: 1000 VRMS MAX AT SEA LEVEL
DIELECTRIC WITHSTANDING VOLTAGE: 2500 VRMS MIN AT SEA LEVEL
INSULATION RESISTANCE: 5000 MEGOHM MIN
CONTACT RESISTANCE:
 CENTER CONTACT - INITIAL 1.0 MILLIOHM MAX, AFTER
 ENVIRONMENTAL 1.5 MILLIOHM MAX
 OUTER CONDUCTOR - INITIAL 0.2 MILLIOHM MAX, AFTER
 ENVIRONMENTAL NOT APPLICABLE
CORONA LEVEL: 500 VOLTS MIN AT 70,000 FEET
INSERTION LOSS: NOT APPLICABLE
RF LEAKAGE: NOT APPLICABLE
RF HIGH POTENTIAL WITHSTANDING VOLTAGE: 1000 VRMS AT 4 AND 7 MHZ
THIRD ORDER INTERMODULATION PRODUCT (IMP3): TYPICALLY < -90 dBm
 (TESTED PER IEC GUIDELINES WITH 20W CW INPUTS AT 1930-1990 MHZ)


MECHANICAL:

ENGAGE/DISENGAGE TORQUE: 6 IN-LBS MAX
MATING TORQUE: 7-10 IN-LBS
COUPLING PROOF TORQUE: NOT APPLICABLE
COUPLING NUT RETENTION: NOT APPLICABLE
CONTACT RETENTION: 6 LBS MIN AXIAL FORCE
4 INCH-OUNCE MIN TORQUE
DURABILITY: 500 CYCLES MIN

ENVIRONMENTAL:

(MEETS OR EXCEEDS THE APPLICABLE PARAGRAPH OF MIL-PRF-39012)
THERMAL SHOCK: MIL-STD-202, METHOD 107, CONDITION B,
EXCEPT 85°C HIGH TEMP
OPERATING TEMPERATURE: -65°C TO 165°C
CORROSION: MIL-STD-202, METHOD 101, CONDITION B
SHOCK: MIL-STD-202, METHOD 213, CONDITION I
VIBRATION: MIL-STD-202, METHOD 204, CONDITION B
MOISTURE RESISTANCE: MIL-STD-202, METHOD 106



TOLERANCE UNLESS OTHERWISE SPECIFIED		DRAWN BY JRK		DATE 3-24-06		 Connectivity Solutions P.O. Box 1732 Waseca, MN 56093 1-800-247-8256	
DECIMALS .XX	mm	CHECKED BY PDW	DATE 5-22-06		TITLE ASSEMBLY, TYPE N, REAR MOUNT BULKHEAD JACK		
.XXX REF			DATE 5-22-06				
MATL		APPROVED BY JRK/MJU	DATE 5-23-06		SHEET 2 OF 2		
FINISH		RELEASE DATE 5-23-06		DRAWING NO. C - 138-4701-401/410			
		U/M	INCH				SCALE

CUSTOMER DRAWING

THIS DRAWING TO BE INTERPRETED
PER ASME Y 14.5M - 1994

" μ STATION"

COMPANY CONFIDENTIAL



Connectivity Solutions
P.O. Box 1732
Waseca, MN 56093
1-800-247-8256

EMERSON
Network Power

TITLE	ASSEMBLY, TYPE N, REAR MOUNT BULKHEAD JACK
-------	--

SHEET
2 OF 2

DRAWING NO.
C - 138-4701-401/410