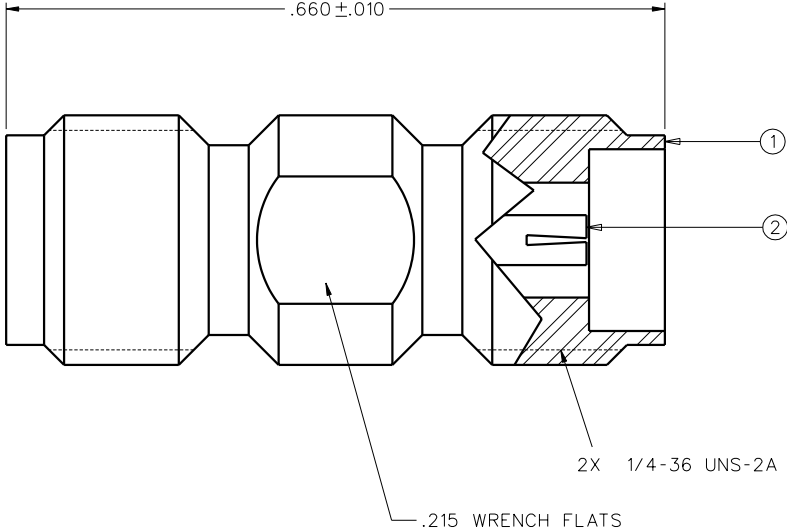


PART NUMBER	ITEM ① BODY	ITEM ② CONTACT	ITEM ③ (NOT SHOWN) SUPPORT BEAD
145-0901-801	STAINLESS STEEL GOLD PL .00001 MIN OVER NICKEL PL .00005 MIN OVER	BERYLLIUM COPPER GOLD PL .00005 MIN OVER NICKEL PL .00005 MIN OVER COPPER PL .00005 MIN	MODIFIED PPE RESIN

DRAWING NO. C - 145-0901-801/810									
0		REVISIONS							
ENGINEERING RELEASE									
1	4-8-04		A	K				12-16-03	ECN 49093



NOTES:

1. SPECIFICATIONS:

IMPEDANCE: 50 OHMS  
FREQUENCY RANGE: 0-40.0 GHz  
VSWR: 1.20 MAX  
WORKING VOLTAGE: 500 VRMS MAX AT SEA LEVEL  
DIELECTRIC WITHSTANDING VOLTAGE: 1500 VRMS MIN AT SEA LEVEL  
INSULATION RESISTANCE: 5000 MEGOHM MIN  
CONTACT RESISTANCE:  
CENTER CONTACT - INITIAL 4.0 MILLIOHM MAX, AFTER ENVIRONMENTAL 6.0 MILLIOHM MAX  
OUTER CONDUCTOR - INITIAL 2.0 MILLIOHM MAX  
AFTER ENVIRONMENTAL NOT APPLICABLE  
BRAID TO BODY - NOT APPLICABLE  
CORONA LEVEL: 375 VOLTS MIN AT 70,000 FEET  
INSERTION LOSS: .06 √F (F IN GHz)  
RF LEAKAGE: -90 dB MIN AT 2.5 GHz  
RF HIGH POTENTIAL WITHSTANDING VOLTAGE: 1000 VRMS MIN AT 4 AND 7 MHz

MECHANICAL:

ENGAGE/DISENGAGE TORQUE: 2 INCH-POUNDS MAX  
MATING TORQUE: 7-10 INCH POUNDS  
CONTACT RETENTION: 6 LBS MIN AXIAL FORCE  
CABLE ACCEPTABILITY: NOT APPLICABLE  
CABLE HEX CRIMP SIZE: NOT APPLICABLE  
CABLE RETENTION: NOT APPLICABLE  
DURABILITY: 500 CYCLES MIN

ENVIRONMENTAL:

(MEETS OR EXCEEDS THE APPLICABLE PARAGRAPH OF MIL-C-39012)  
THERMAL SHOCK: MIL-STD-202, METHOD 107, CONDITION B  
OPERATING TEMPERATURE: -65 DEG C TO 165 DEG C  
CORROSION: MIL-STD-202, METHOD 101, CONDITION B  
SHOCK: MIL-STD-202, METHOD 213, CONDITION I  
VIBRATION: MIL-STD-202, METHOD 204, CONDITION D  
MOISTURE RESISTANCE: MIL-STD-202, METHOD 106

CUSTOMER DRAWING

THIS DRAWING TO BE INTERPRETED  
PER ANSI Y 14.5M - 1982

"μSTATION"

COMPANY CONFIDENTIAL

TOLERANCE UNLESS OTHERWISE SPECIFIED		DRAWN BY	DATE	299 Johnson Ave. P.O. Box 1732 Waseca, MN 56093-0832	
DECIMALS	mm	T.A.Kari	12-11-03	ADAPTER ASSEMBLY	
.XX		CHECKED BY	DATE	JACK TO JACK	
.XXX		APPROVED BY	DATE	SMK (2.92mm)	
MATL		APPROVED BY	DATE	CODE NO.	DRAWING NO.
		T.A.Kari	4-8-04		C - 145-0901-801/810
FINISH		RELEASE DATE	4-8-04	SCALE 10:1	U/M INCH SHEET 2 OF 2