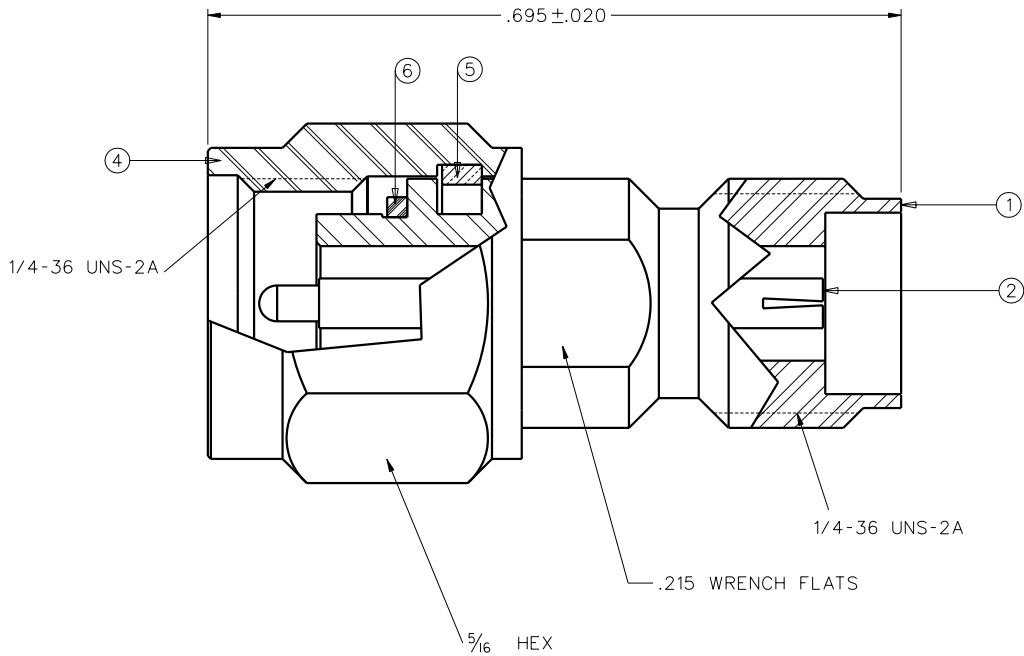


| PART NUMBER  | ITEM ①<br>BODY  | ITEM ②<br>CONTACT  | ITEM ③ (NOT SHOWN)<br>SUPPORT BEAD | ITEM ④<br>COUPLING NUT  | ITEM ⑤<br>RETENTION SPRING   | ITEM ⑥<br>GASKET |
|--------------|---|--|------------------------------------|---|------------------------------|------------------|
| 145-0901-821 | STAINLESS STEEL<br>GOLD PL .00001 MIN OVER<br>NICKEL PL .00005 MIN OVER | BERYLLIUM COPPER<br>GOLD PL .00005 MIN OVER<br>NICKEL PL .00005 MIN OVER<br>COPPER PL .00005 MIN | MODIFIED PPE RESIN                 | STAINLESS STEEL<br>GOLD PL .00001 MIN OVER<br>NICKEL PL .00005 MIN OVER | BERYLLIUM COPPER<br>UNPLATED | SILICONE         |



NOTES:

1. SPECIFICATIONS:

IMPEDANCE: 50 OHMS  
FREQUENCY RANGE: 0-40.0 GHz  
VSWR: 1.20 MAX  
WORKING VOLTAGE: 500 VRMS MAX AT SEA LEVEL  
DIELECTRIC WITHSTANDING VOLTAGE: 1500 VRMS MIN AT SEA LEVEL  
INSULATION RESISTANCE: 5000 MEGOHM MIN  
CONTACT RESISTANCE:  
CENTER CONTACT - INITIAL 4.0 MILLIOHM MAX, AFTER ENVIRONMENTAL 6.0 MILLIOHM MAX  
OUTER CONDUCTOR - INITIAL 2.0 MILLIOHM MAX, AFTER ENVIRONMENTAL NOT APPLICABLE  
BRAID TO BODY - NOT APPLICABLE  
CORONA LEVEL: 375 VOLTS MIN AT 70,000 FEET  
INSERTION LOSS: .06 √F (F IN GHz)  
RF LEAKAGE: -90 dB MIN AT 2.5 GHz  
RF HIGH POTENTIAL WITHSTANDING VOLTAGE: 1000 VRMS MIN AT 4 AND 7 MHz

MECHANICAL:

ENGAGE/DISENGAGE TORQUE: 2 INCH-POUNDS MAX  
MATING TORQUE: 7-10 INCH-POUNDS  
COUPLING PROOF TORQUE: 15 INCH-POUNDS  
COUPLING NUT RETENTION: 60 POUNDS MINIMUM  
CONTACT RETENTION: 6 LBS MIN AXIAL FORCE  
CABLE ACCEPTABILITY: NOT APPLICABLE  
CABLE HEX CRIMP SIZE: NOT APPLICABLE  
CABLE RETENTION: NOT APPLICABLE  
DURABILITY: 500 CYCLES MIN

ENVIRONMENTAL:

(MEETS OR EXCEEDS THE APPLICABLE PARAGRAPH OF MIL-C-39012)  
THERMAL SHOCK: MIL-STD-202, METHOD 107, CONDITION B  
OPERATING TEMPERATURE: -65 DEG C TO 165 DEG C  
CORROSION: MIL-STD-202, METHOD 101, CONDITION B  
SHOCK: MIL-STD-202, METHOD 213, CONDITION I  
VIBRATION: MIL-STD-202, METHOD 204, CONDITION D  
MOISTURE RESISTANCE: MIL-STD-202, METHOD 106


|                      |         |           |  |             |  |  |          |           |  |
|----------------------|---------|-----------|--|-------------|--|--|----------|-----------|--|
| DRAWING NO.          |         |           |  |             |  |  |          |           |  |
| C - 145-0901-821/830 |         |           |  |             |  |  |          |           |  |
| 0                    |         | REVISIONS |  |             |  |  |          |           |  |
| ENGINEERING RELEASE  |         |           |  |             |  |  |          |           |  |
| 1                    | 4-22-04 |           |  | T<br>A<br>K |  |  | 12-17-03 | ECN 49100 |  |

CUSTOMER DRAWING

THIS DRAWING TO BE INTERPRETED  
PER ANSI Y 14.5M - 1982

"μSTATION"

COMPANY CONFIDENTIAL

|                                      |    |              |          |  |                       |
|--------------------------------------|----|--------------|----------|--|-----------------------|
| TOLERANCE UNLESS OTHERWISE SPECIFIED |    | DRAWN BY     | DATE     |  299 Johnson Ave.<br>P.O. Box 1732<br>Waseca, MN 56093-0832 |                       |
| DECIMALS                             | mm | T.A.Kari     | 12-11-03 |  |                       |
| .XX                                  |    | CHECKED BY   | DATE     | TITLE<br>ADAPTER ASSEMBLY<br>PLUG TO JACK<br>SMK (2.92mm)  |                       |
| .XXX                                 |    | APPROVED BY  | DATE     |  |                       |
| MATL                                 |    | APPROVED BY  | DATE     | CODE NO.   | DRAWING NO.           |
| FINISH                               |    | RELEASE DATE | 4-22-04  |  | C - 145-0901-821/830  |
|                                      |    |              |          | SCALE 10:1   | U/M INCH SHEET 2 OF 2 |