

RDI Series

Residential Door Interlock Switch



DESCRIPTION

The RDI Series electromechanical door interlock is designed specifically for swing door applications, which may include residential elevators, dumbwaiters, and platform lifts. The door interlock holds the door in place and prevents it from being opened when not desired (e.g. the elevator/lift car is not present at the door). A number of design features contribute to increase safety, reduce nuisance stoppages and call-backs, and contribute to simplified wiring and installation.

Featuring a custom internal solenoid control, the RDI may reduce complexity of the host controller, reduce power consumption for a “greener” product, extend solenoid life and reduce solenoid “time outs,” reducing customer aggravation. Two Honeywell MICRO SWITCH™ switches are used to indicate door closure, providing an extra level of reliability.

FEATURES

- Compliant to ASME A17.1 and UL 104
- Manual override for easy actuation without user hazard
- Two separate mechanical actions to indicate door closure
- Available with white or architectural bronze metal housings
- Metal key
- Internal solenoid control
- No open or exposed contacts
- Key engagement minimizes nuisance stoppage
- Door closure retention cam to hold door with minimal key-to-interlock play
- Cat 5 connection available
- Configurable product platform
- Universal voltage for ac and dc applications
- 51,44 mm W x 247,65 mm H x 49,23 mm D [2.025 in W x 9.75 in H x 1.938 in D]

Reliability and smooth operations are also enhanced by use of a metal key, that is less susceptible to bending and breakage. The lack of open or exposed contacts minimizes the possibility of owners making manual adjustments. Finally, the engagement of the key initiates electrical contact.

The snap-action cam mechanism requires less adjustment set-up time and reduces door movement that can cause nuisance shutdown. A Cat 5 connection option is available, simplifying installation. This door interlock is configurable and available in left- and right-hand versions, allowing for simplified customization. It is designed to be easy for the OEM to retrofit into their current design.

POTENTIAL APPLICATIONS

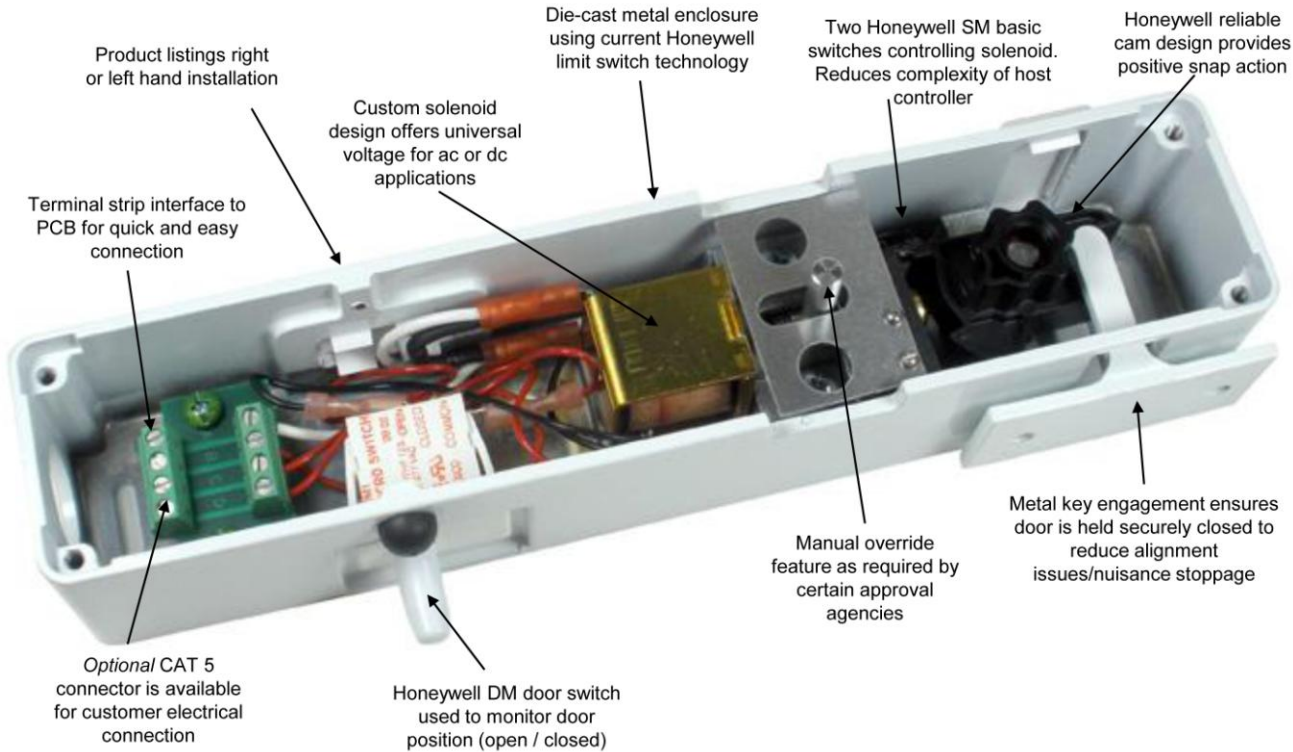
- Residential elevators
- Residential dumbwaiters
- Platform/vertical lifts

BENEFITS

- Meets required safety codes
- Reduces potential for call-backs
- Reliable performance and multiple design features to minimize nuisance stoppage of applications
- Simplified wiring and installation
- Reduced OEM design and manufacturing costs
- Stronger OEM sales message: increased safety, reduced owner aggravation, reduced power consumption
- Honeywell brand quality

RDI Series

DESIGN FEATURES

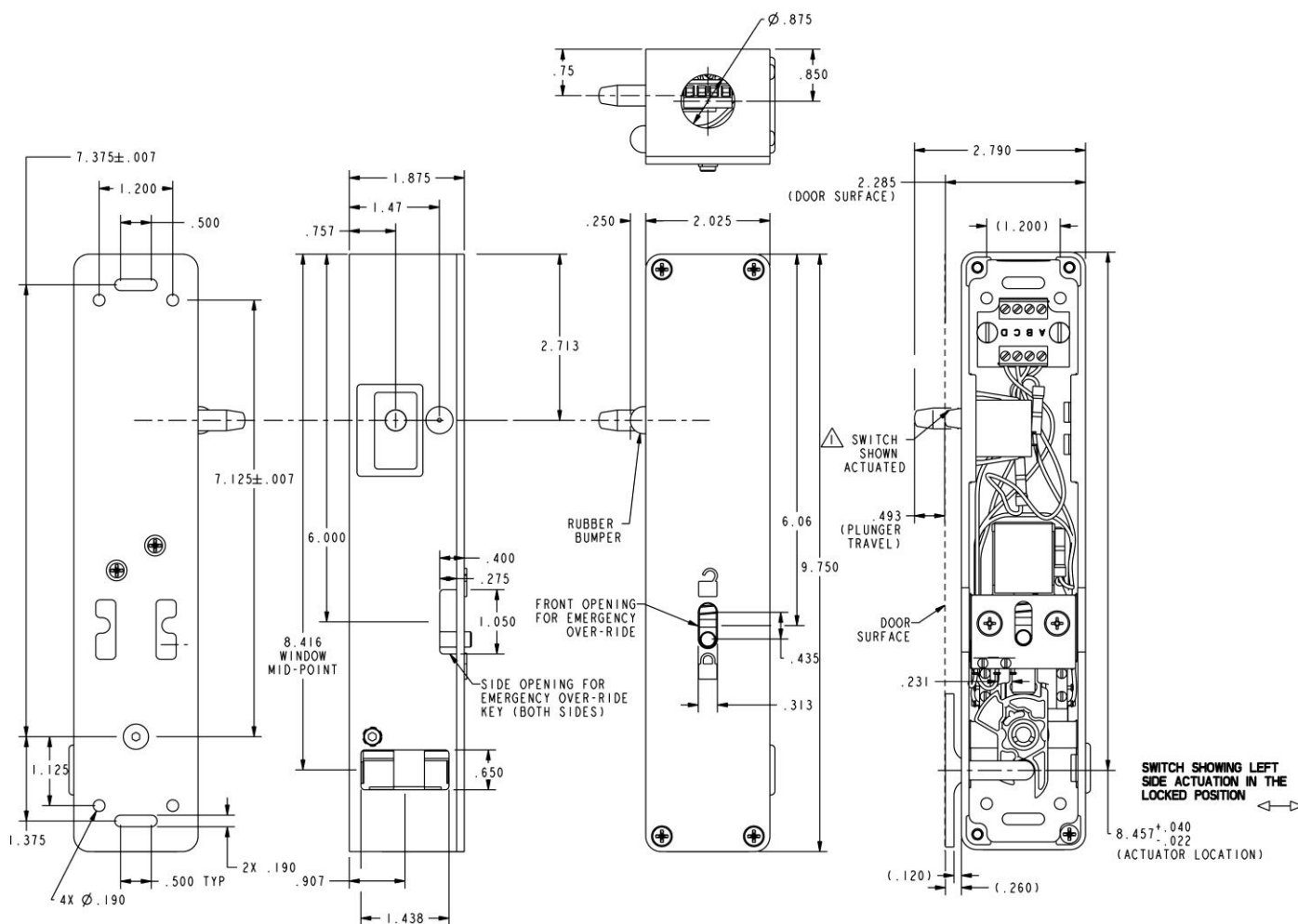


PRODUCT LISTING

Catalog Listings	Description
RDI-G-R	Right-hand door interlock (white metal cover)
RDI-G-L	Left-hand door interlock (white metal cover)
RDI-H-LBR	Left-hand door interlock (architectural bronze metal cover)
RDI-H-RBR	Right-hand door interlock (architectural bronze metal cover)

Door Interlock Switches

DIMENSIONS



WARNING

RISK TO LIFE OR PROPERTY

Never use this product for an application involving serious risk to life or property without ensuring that the system as a whole has been designed to address the risks, and that this product is properly rated and installed for the intended use within the overall system.

Failure to comply with these instructions could result in death or serious injury.

WARRANTY/REMEDY

Honeywell warrants goods of its manufacture as being free of defective materials and faulty workmanship. Honeywell's standard product warranty applies unless agreed to otherwise by Honeywell in writing; please refer to your order acknowledgement or consult your local sales office for specific warranty details. If warranted goods are returned to Honeywell during the period of coverage, Honeywell will repair or replace, at its option, without charge those items it finds defective. **The foregoing is buyer's sole remedy and is in lieu of all other warranties, expressed or implied, including those of merchantability and fitness for a particular purpose. In no event shall Honeywell be liable for consequential, special, or indirect damages.**

While we provide application assistance personally, through our literature and the Honeywell web site, it is up to the customer to determine the suitability of the product in the application.

Specifications may change without notice. The information we supply is believed to be accurate and reliable as of this printing. However, we assume no responsibility for its use.

WARNING

MISUSE OF DOCUMENTATION

- The information presented in this product sheet is for reference only. Do not use this document as a product installation guide.
- Complete installation, operation, and maintenance information is provided in the instructions supplied with each product.

Failure to comply with these instructions could result in death or serious injury.

SALES AND SERVICE

Honeywell serves its customers through a worldwide network of sales offices, representatives and distributors. For application assistance, current specifications, pricing or name of the nearest Authorized Distributor, contact your local sales office or:

E-mail: info.sc@honeywell.com

Internet: www.honeywell.com/sensing

Phone and Fax:

Asia Pacific	+65 6355-2828
	+65 6445-3033 Fax
Europe	+44 (0) 1698 481481
	+44 (0) 1698 481676 Fax
Latin America	+1-305-805-8188
	+1-305-883-8257 Fax
USA/Canada	+1-800-537-6945
	+1-815-235-6847
	+1-815-235-6545 Fax