

# MICRO SWITCH

A DIVISION OF HONEYWELL-CONTRAVEL TECHNOLOGY COMPANY  
MILWAUKEE, WISCONSIN

FED. MFR. CODE 91929

# ACTUATOR - SWITCH

CATALOG LISTING

## JV-30

(M) JV-30  
ISSUE 2

M JV-30

DRAWING NUMBER

ISSUE 8

REPLACES

RELEASE NO.

11 MAY 56

CHECK C.N.T.

10 MAY 56

CHECK B.L.S.

17 MAY 56

CHECK P.L.Z.

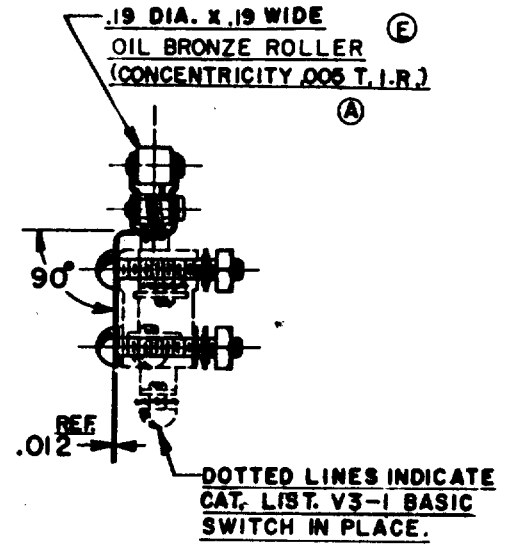
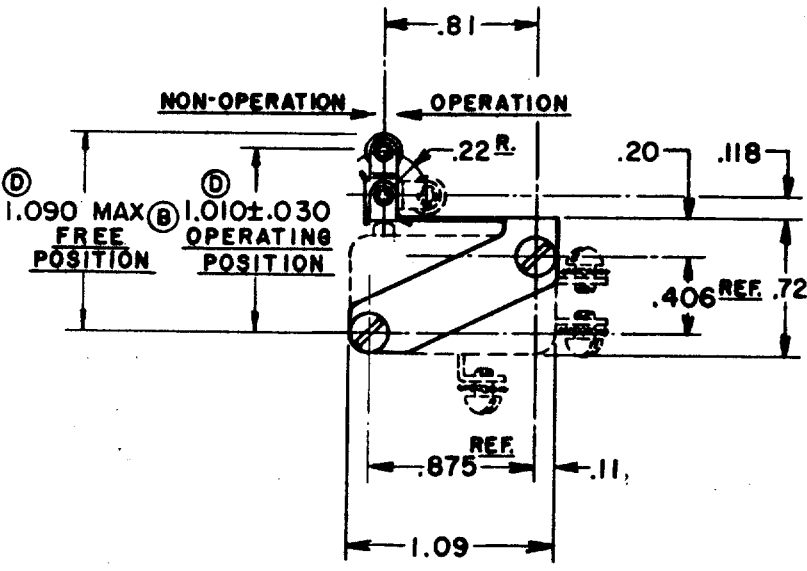
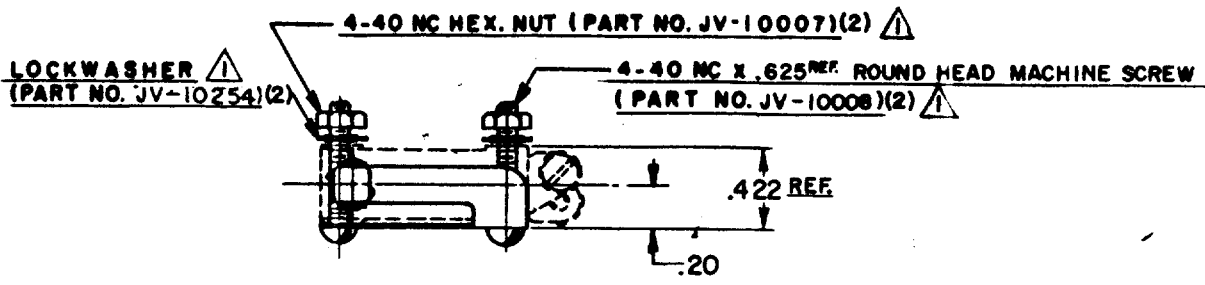
7 MAY 56

CHECK R.E.R.

7 FEB 75

DRAWN

74-08



**NOTE -**

$\triangle$  - FURNISHED UNASSEMBLED.

$\textcircled{C}$  2 - ACTUATOR NOT SATISFACTORY FOR USE ON V3-600 AND 700 SERIES SWITCHES

THIS DRAWING COVERS A PROPRIETARY ITEM AND IS THE PROPERTY OF MICRO SWITCH, A DIVISION OF HONEYWELL. THIS DRAWING IS NOT TO BE COPIED OR USED WITHOUT THE APPROVAL OF MICRO SWITCH.

CHARACTERISTICS WITH V3-1 BASIC SWITCH INSTALLED	
OPERATING FORCE	18 OZ MAX
RELEASE FORCE	6 OZ MIN
PRETRAVEL	.080 MAX
DIFFERENTIAL TRAVEL	.015 MAX
OVERTRAVEL	.020 MIN

ELECTRICAL DATA	
CONTACT ARRANGEMENT	BREAK DISTANCE

SCALE FULL	
DO NOT SCALE PRINT	
UNLESS OTHERWISE SPECIFIED DIMENSIONS ARE IN INCHES	
<b>TOLERANCES ARE:</b>	
ONE PLACE (.0)	$\pm$ .030
TWO PLACE (.00)	$\pm$ .015
THREE PLACE (.000)	$\pm$ .005
ANGLES	$\pm$ 2°
WEIGHT	

$\textcircled{B}$