

# MICRO SWITCH

FREEPORT ILLINOIS, U.S.A  
A DIVISION OF HONEYWELL  
FED. MFG. CODE 91929

## ACTUATOR-SWITCH

CATALOG LISTING

JV-311

JV-311

M

DRAWING  
NUMBER

3

ISSUE

RELEASE NO. PR-11675-T REPLACES X76225-JV

CHECK

REVISIONS

A PRI11675  
TSK  
11 NOV 82

CHECK

12 NOV 82

CHECK

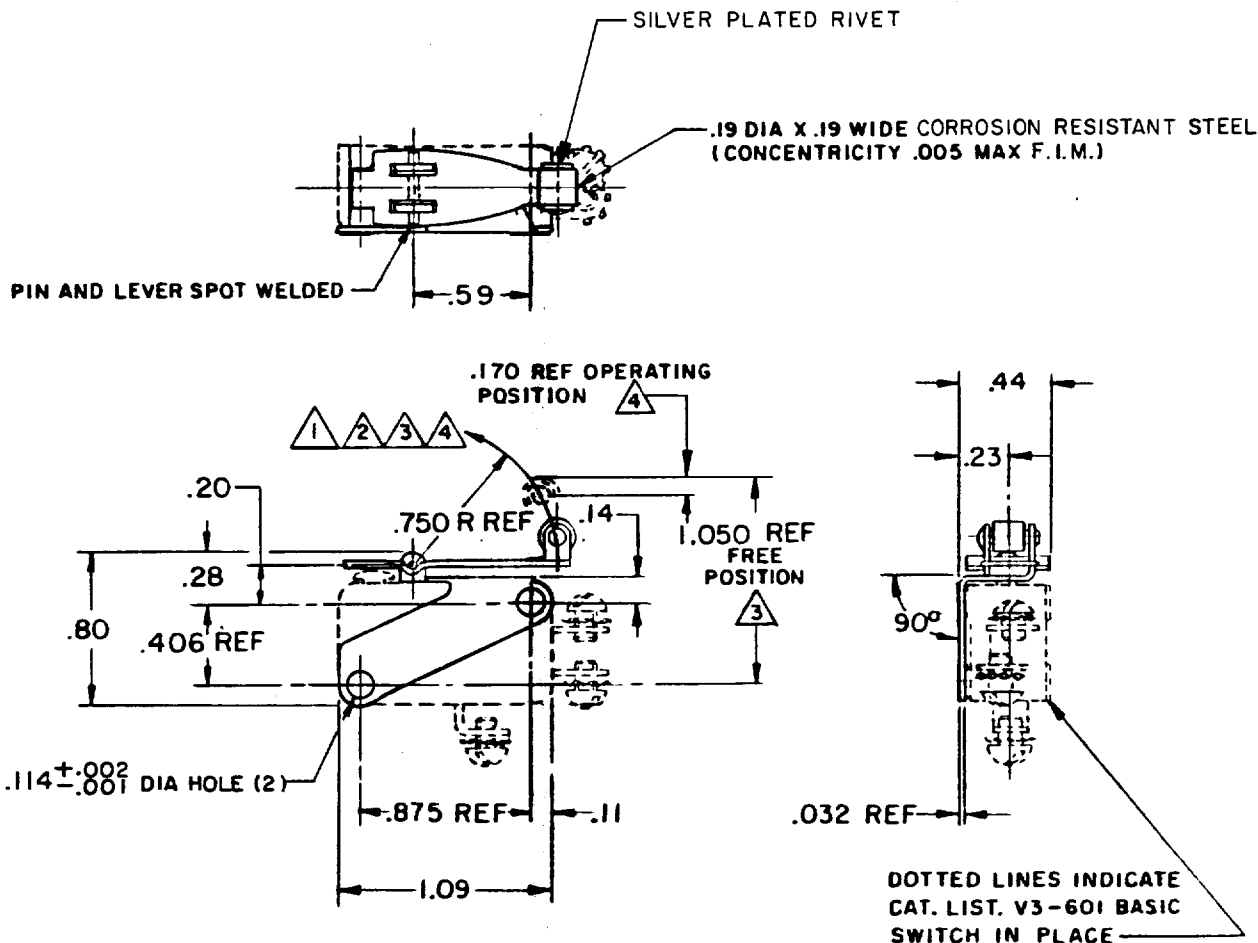
12 NOV 82

CHECK

12 NOV 82

TSK

FO-52848-A

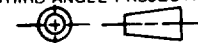


### NOTES

- 1 REVERSE ACTUATION ACTUATOR (V3-601 BASIC NOT FURNISHED)
- 2 1.050 REF FREE POSITION WITH BASIC SWITCH PLUNGER FULLY OVERTRAVELED A MINIMUM RETURN FORCE OF .5 OZ REQUIRED UPWARD AT THE .75 RADIUS BY AN EXTERNAL RETURN FORCE MECHANISM
- 3 .170 APPROX TRAVEL DOWNWARD FROM THE 1.050 REF FREE POSITION TO OPERATE BASIC SWITCH
- 4 ACTUATOR WILL NOT NECESSARILY RELEASE TYPE V3-601 BASIC WITHOUT CUSTOMER ADJUSTMENT OF ACTUATOR LEVER

THIS DRAWING COVERS A PROPRIETARY ITEM AND IS THE PROPERTY OF MICRO SWITCH. A DIVISION OF HONEYWELL. THIS DRAWING IS NOT TO BE COPIED OR USED WITHOUT THE APPROVAL OF MICRO SWITCH.

THIRD ANGLE PROJECTION



### CHARACTERISTICS

### ELECTRICAL DATA

SCALE FULL

CONTACT ARRANGEMENT

DO NOT SCALE PRINT

#### TOLERANCES

APPLY TO DESIGN UNITS. CONVERSIONS ARE ONLY FOR REFERENCE. UNLESS NOTED, TOLERANCES ARE ±

	DIM. mm	TOL. mm/in	DIM. in	TOL. mm/in
NO PLACES	X	1/.04	X	0.01/0.03
ONE PLACE	X,X	0.4/.016	X,X	0.004/0.016
TWO PLACES	X,X,X	0.16/.008	X,X,X	0.001/0.008
THREE PLACES	X,X,X,X		X,X,X,X	
ANGLES				

± 2°

DESIGN UNITS

SI METRIC

US CUSTOMARY

WEIGHT .013 LB MAX