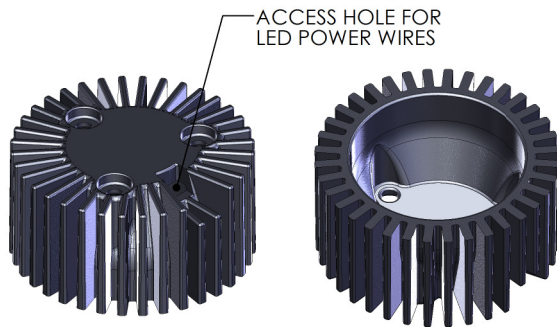
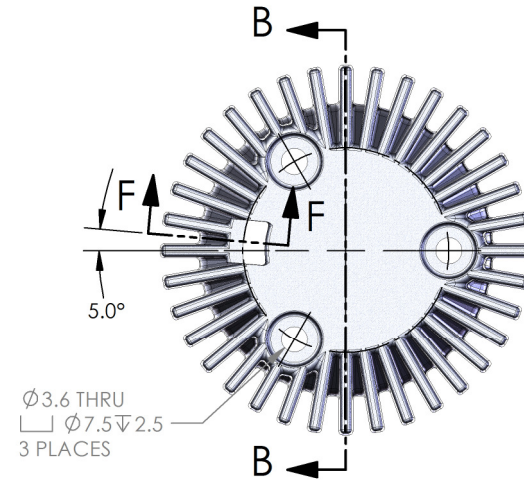
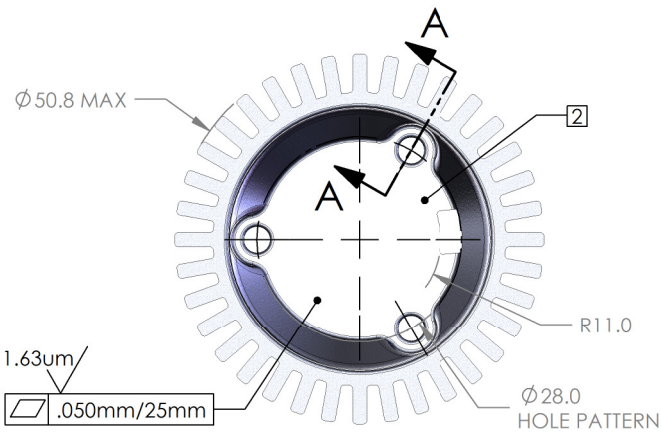


NOTES:

1. MASS VALUE IS APPROXIMATELY: 47g.
2. THIS SURFACE TO BE FREE OF ANY TREATMENT.
3. E-COAT SURFACE TREATMENT IS APPLIED TO ALL SURFACES UNLESS OTHERWISE INDICATED.
4. LED MOUNTING SURFACE. SURFACE IS MACHINED AND FREE OF FINISH.

REV	DESCRIPTION	BY	APR	DATE
A01	INITIAL RELEASE	CHC		2009-06-16



ANGLED VIEWS FOR REFERENCE ONLY.

PROPRIETARY AND CONFIDENTIAL: THE INFORMATION CONTAINED IN THIS DRAWING IS THE SOLE PROPERTY OF NUVENTIX, INC. ANY REPRODUCTION IN PART OR AS A WHOLE WITHOUT THE WRITTEN PERMISSION OF NUVENTIX, INC IS PROHIBITED.

UNLESS OTHERWISE SPECIFIED:
 -ALL DIMENSIONS IN MILLIMETERS
 -DRAFT ANGLES TO BE 3 DEGREES
 -DIMENSIONS INCLUDE PLATING TOLERANCES:
 .X: ± 0.2
 .XX: ± 0.1
 ANGLES: $\pm 0.5^\circ$

SIZE
B

MATERIAL ALUMINUM ALLOY
 FINISH SEE NOTES
 DO NOT SCALE DRAWING

NAME DATE
 CHC 16JUN09
 CHECKED
 ENG APPR.

THIRD ANGLE PROJECTION

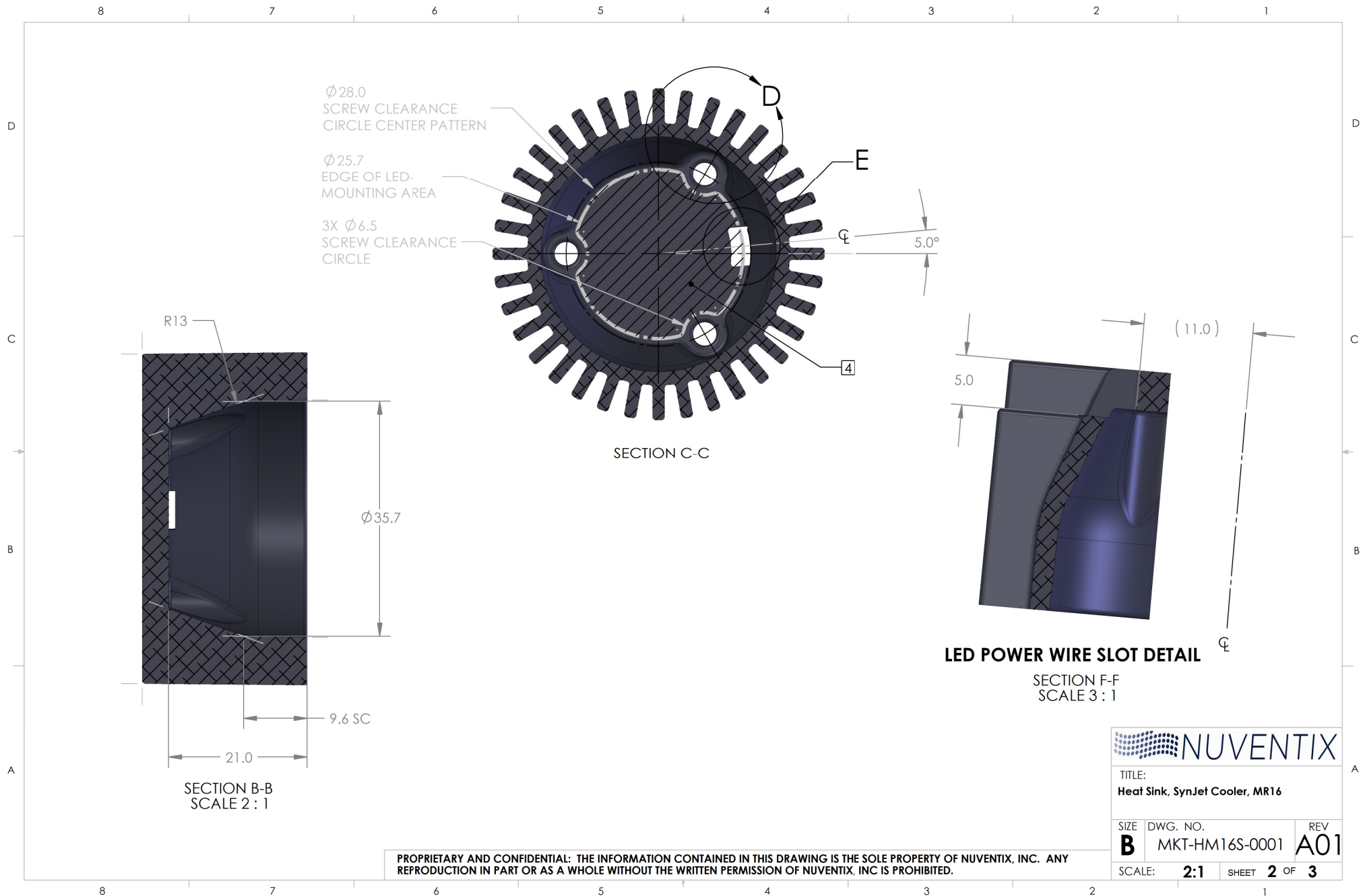


NUVENTIX

TITLE:
 Heat Sink, SynJet Cooler, MR16

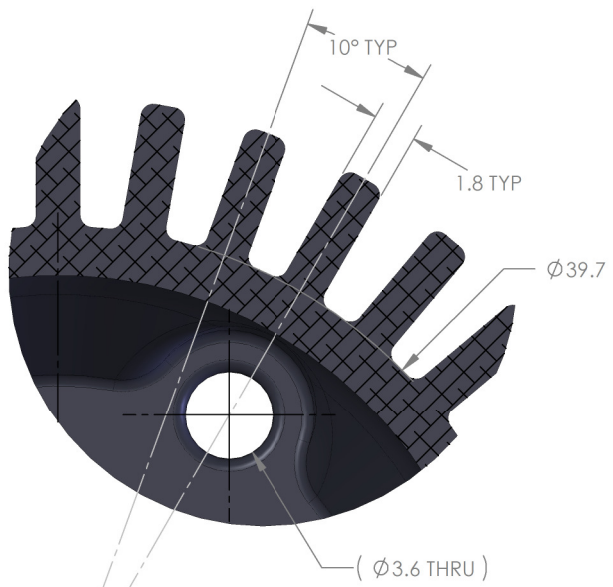
DWG. NO. MKT-HM16S-0001 REV A01

SCALE: 3:2 SHEET 1 OF 3



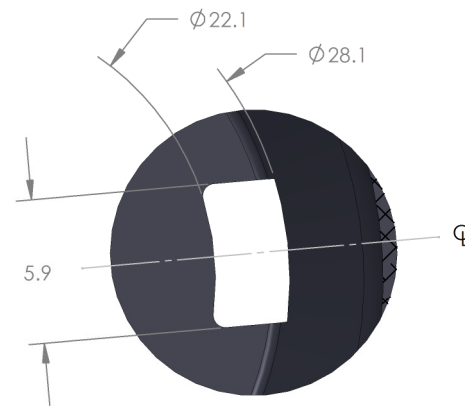
PROPRIETARY AND CONFIDENTIAL: THE INFORMATION CONTAINED IN THIS DRAWING IS THE SOLE PROPERTY OF NUVENTIX, INC. ANY REPRODUCTION IN PART OR AS A WHOLE WITHOUT THE WRITTEN PERMISSION OF NUVENTIX, INC IS PROHIBITED.

 NUVENTIX		
TITLE: Heat Sink, SynJet Cooler, MR16		
SIZE B	DWG. NO. MKT-HM16S-0001	REV A01
SCALE: 2:1	SHEET 2 OF 3	




FIN DETAILS

DETAIL D
SCALE 5 : 1



WIRE ACCESS HOLE DETAILS

DETAIL E
SCALE 5 : 1

 NUVENTIX		
TITLE: Heat Sink, SynJet Cooler, MR16		
SIZE B	DWG. NO. MKT-HM16S-0001	REV A01
SCALE: 1.5:1 SHEET 3 OF 3		

PROPRIETARY AND CONFIDENTIAL: THE INFORMATION CONTAINED IN THIS DRAWING IS THE SOLE PROPERTY OF NUVENTIX, INC. ANY REPRODUCTION IN PART OR AS A WHOLE WITHOUT THE WRITTEN PERMISSION OF NUVENTIX, INC IS PROHIBITED.