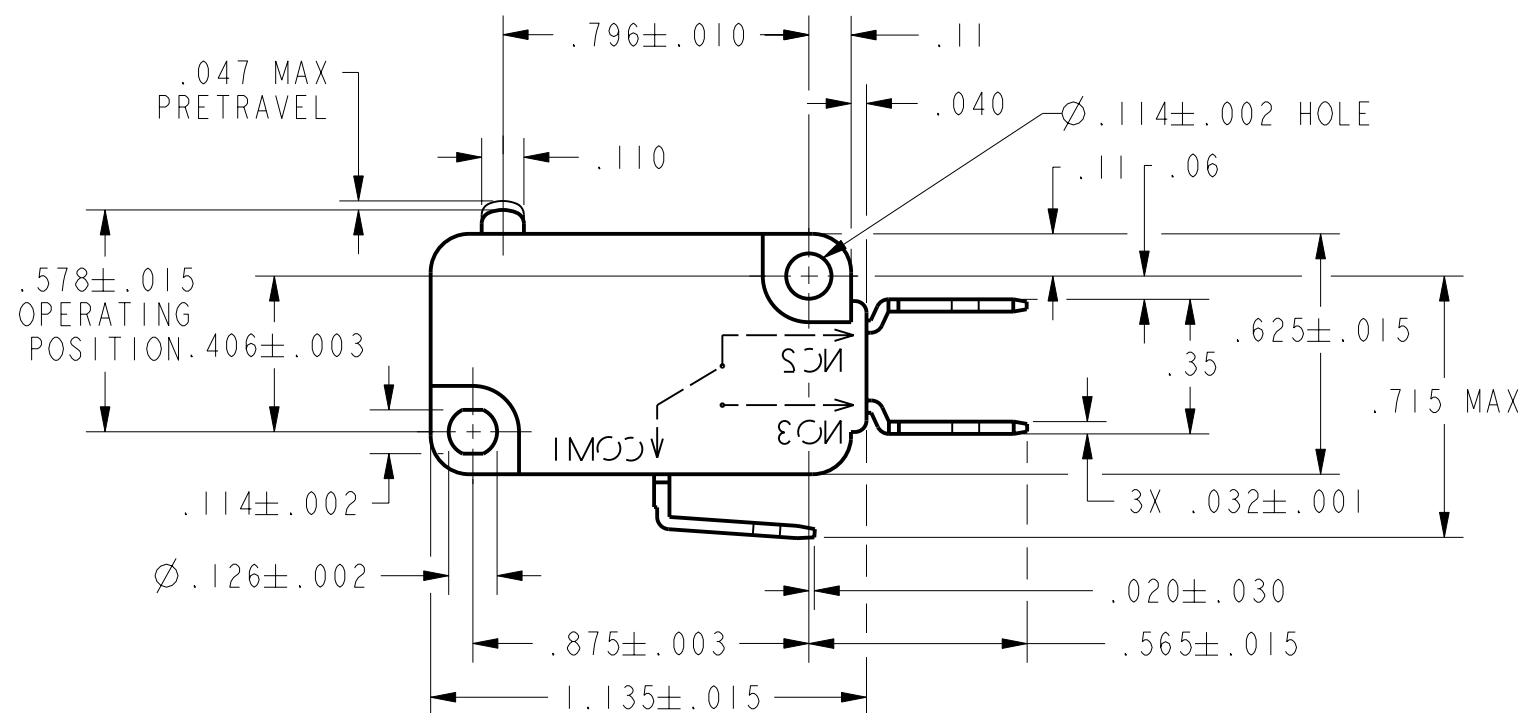
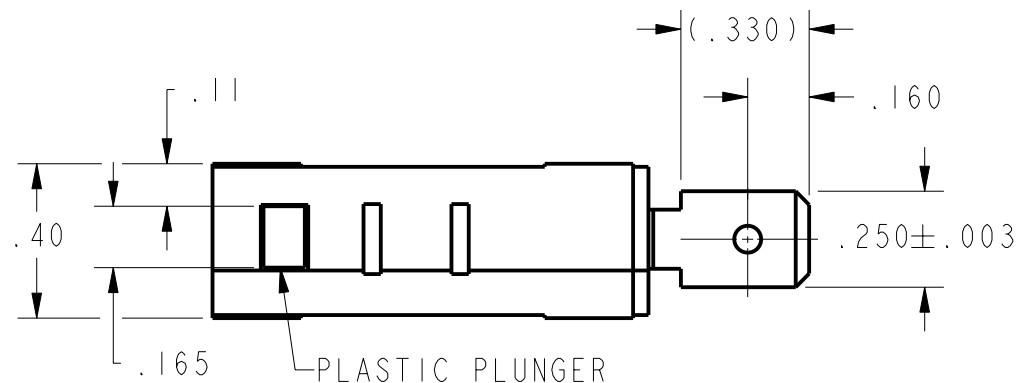






REV	DOCUMENT	CHANGED BY	CHECK
2	202161	DCS 19 JAN 01	SAV



CHARACTERISTICS	
OPERATING FORCE	— — — 50 GRAMS MAX
RELEASE FORCE	— — — — 5 GRAMS MIN
DIFFERENTIAL TRAVEL	— — — .002 - .010
OVERTRAVEL	— — — — .050 MIN
FREE POSITION	— — — — .625 MAX
RELEASE TRAVEL	— — — — .010 MIN

ELECTRICAL DATA	
CONTACT ARRANGEMENT S P D T	
L216	
10A 1/3HP 125, 250 OR 277 VAC	
1/2A 125 VDC	
1/4A 250 VDC; 4A 125 VAC "L"	
  	

UNLESS OTHERWISE SPECIFIED TOLERANCES ARE:			
	<input checked="" type="checkbox"/> US (inch) CUSTOMARY	<input type="checkbox"/> SI (mm) METRIC	
NO PLACE	X	±.040	±1
ONE PLACE	.X	±.030	±0,4
TWO PLACE	.XX	±.015	±0,15
THREE PLACE	.XXX	±.005	±
ANGLES		± 5°	±
RAW MATERIAL-COMMERCIAL STANDARD			
THIRD ANGLE PROJECTION			
			

DRAWN	DCS	19 JAN 01
CHECK	SAV	19 JAN 01
THIS DRAWING COVERS A PROPRIETARY ITEM AND IS THE PROPERTY OF HONEYWELL SENSING AND CONTROL. THIS DRAWING IS NOT TO BE COPIED OR USED WITHOUT THE PERMISSION OF HONEYWELL.		
DIMENSIONS ARE TO BE MET BEFORE PROTECTIVE COATINGS ARE APPLIED		
PTC 2D	ASME Y14.5M-1994	

<b>Honeywell</b>			
Sensing and Control			
TITLE <b>SWITCH - BASIC</b>			
SIZE	DWG TYPE	DRAWING NAME	REV
<b>B</b>	<b>M</b>	<b>V7-3E19E9</b>	<b>2</b>
SCALE	2:1	WEIGHT	SHEET 1 OF 1